

4

3

2

1

Wall Connection:

Option1: *Recommended*
M12 Threaded Bar with Lock Nuts

Option2:
M12x100 Anchor Bolts

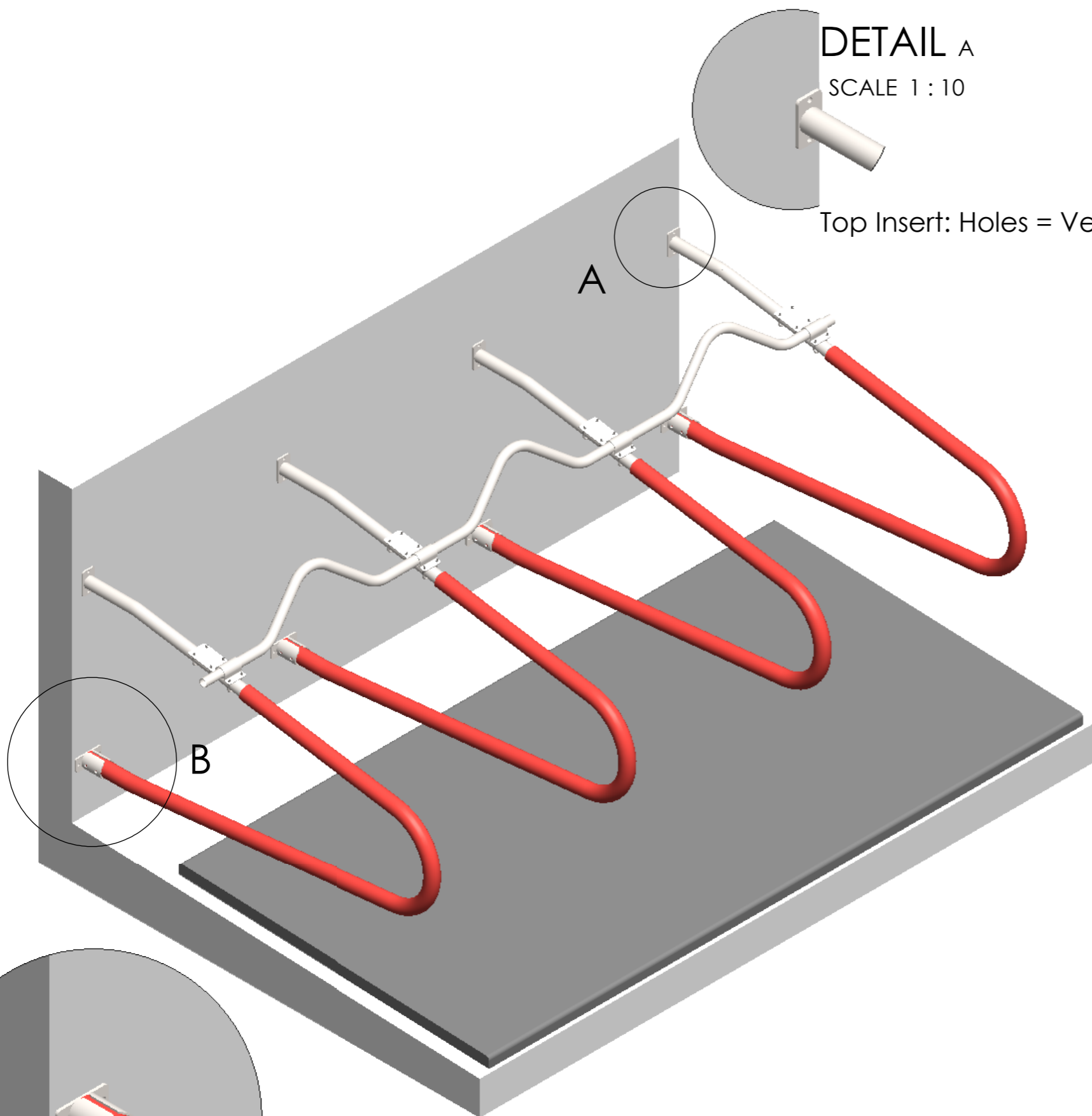
DETAIL A

SCALE 1 : 10



Top Insert: Holes = Vertical

A



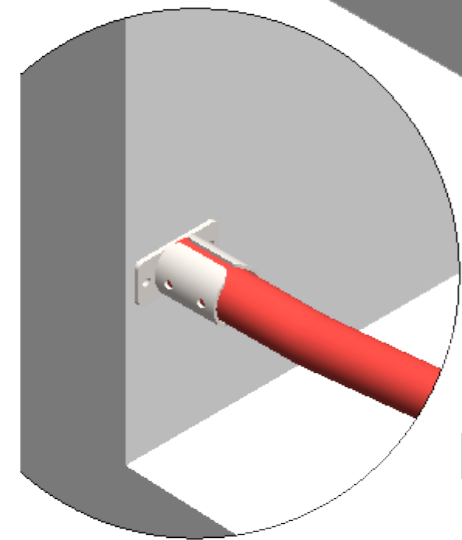
B

225-300mm (9-12")

2000-2100mm (79-83")

250mm / 10"

Varies



75mm Fixed Bracket: Holes = Horizontal

DETAIL B

SCALE 1 : 10

4

3

2

1



Description:
Hybrid Flex Cubicle
Wall Mounted