



**C**ONDON  
ENGINEERING

Livestock Equipment  
Specialists





# About Us

At Condon Engineering, we design products to assist farmers in comfortably housing and properly caring for their animals. We offer a vast product range and have been providing innovative solutions for almost 30 years.

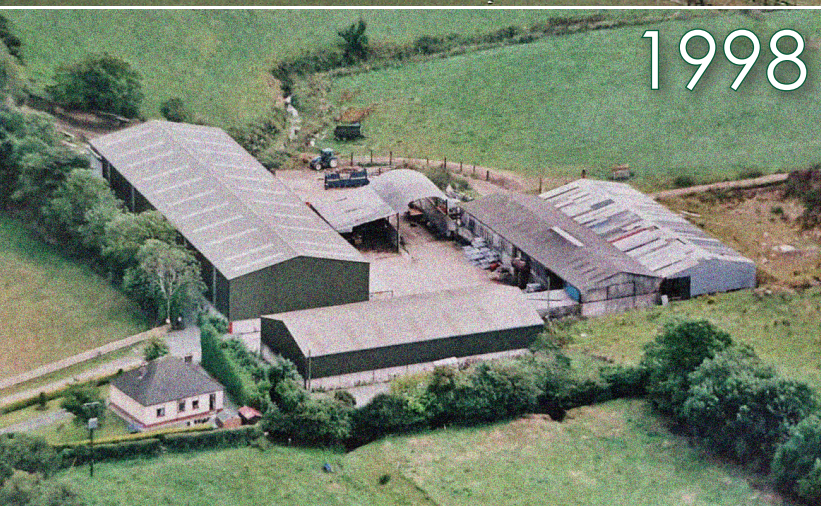
In the mid 1980's, Tom Condon started making cow cubicles for his own farm. Condon Engineering was officially founded in 1993 and, over the years, the company has established itself within the Irish agri market.

We are immensely proud of the fact we manufacture our products in Ireland and that we employ so many people from our own community. We currently employ over 60 full time staff, along with our own family members, Tom's sons; Keith, Jason, Graham & Edward.

True to our roots, we pride ourselves on our resourceful nature as well as our farming background. Using the best processes and the latest technology, our team will work with you to deliver a solution that fits your needs.



1986



1998



2010



2023

## Through the Years





Tom, Keith, Jason, Graham & Edward Condon.

## CONTENTS

---

COW CUBICLES	<b>4</b>
GATES	<b>18</b>
FEED BARRIERS	<b>26</b>
FEEDERS & DRINKERS	<b>32</b>
CALF EQUIPMENT	<b>40</b>
HANDLING EQUIPMENT	<b>50</b>
SHEEP EQUIPMENT	<b>64</b>









# COW CUBICLES





The Adjustable Cantilever Cubicle is our standard steel cubicle. It features a post and rail system and has been used very successfully for many years.

- ✓ Increased lying times and better cow comfort.
- ✓ Support rails prevent walk through.
- ✓ Easy to adjust the height and width of the cubicle.
- ✓ Post & Rail system allows for quick, easy installation.
- ✓ Available in single or head to head rows.



### Sizes Available

5ft 9in   6ft   6ft 3in   6ft 6in   6ft 9in   7ft





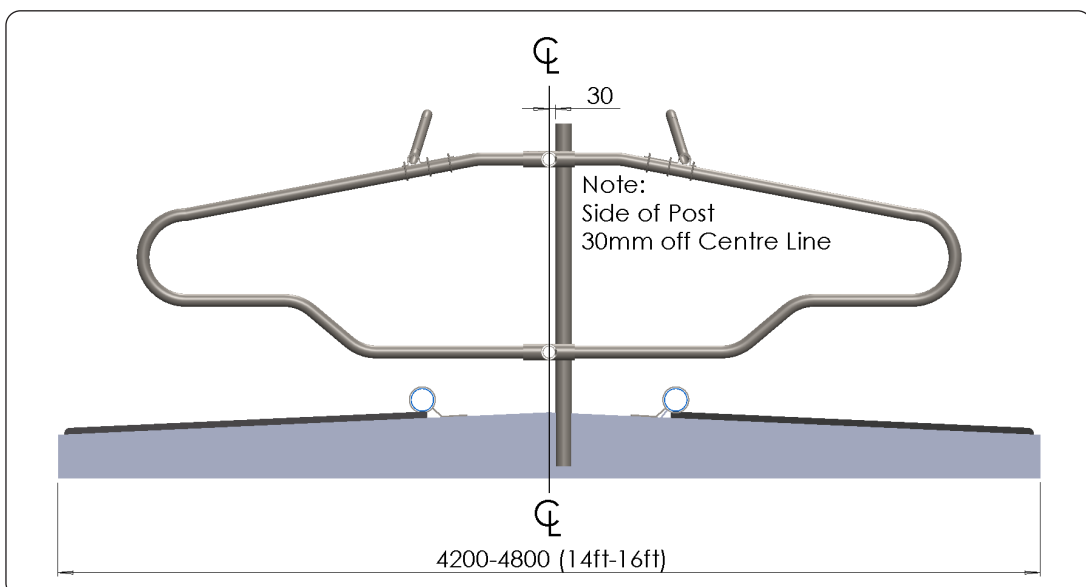
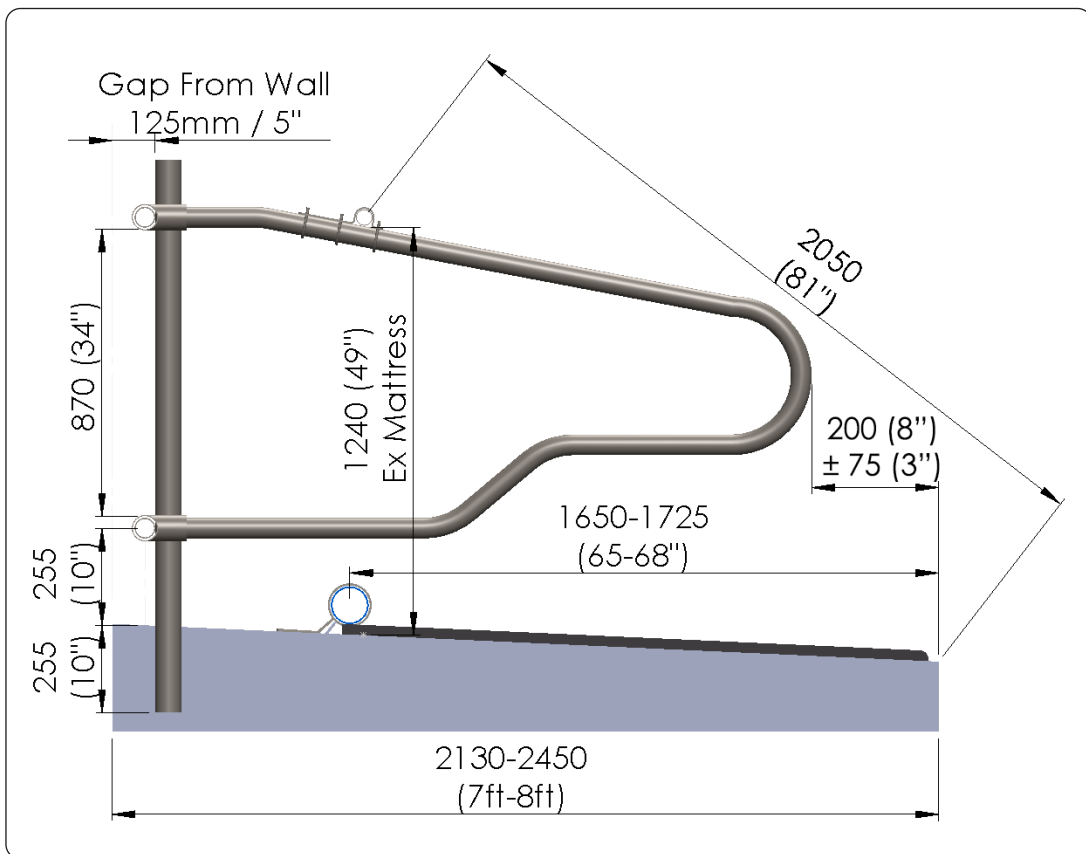
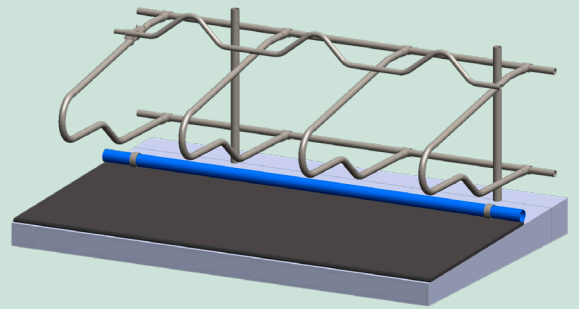
# TECHNICAL SPECIFICATIONS

Cubicle Loop: 60mm x 3.25mm CHS Pipe

Cubicle Post: 76mm x 3.65mm every 8ft-9ft

Cubicle Support Rails: 60mm x 3.25mm CHS

Neck Rail: 48mm x 2.5mm CHS







The Hybrid Flex Cubicle sets a new standard for cow comfort. By combining a plastic loop with a steel frame, we've struck the perfect balance of flexibility and structural integrity.

- ✓ Slight flex improves comfort without encroaching on adjacent spaces.
- ✓ Our Zig Zag Neck Rail offers 8 inches more height versus a straight rail.
- ✓ Improved comfort leads to reduced healthcare and veterinary costs.
- ✓ Available mounted on posts & rails or individually on square posts (see right).
- ✓ Available in single or head to head rows.



### Sizes Available

6ft

6ft 3in

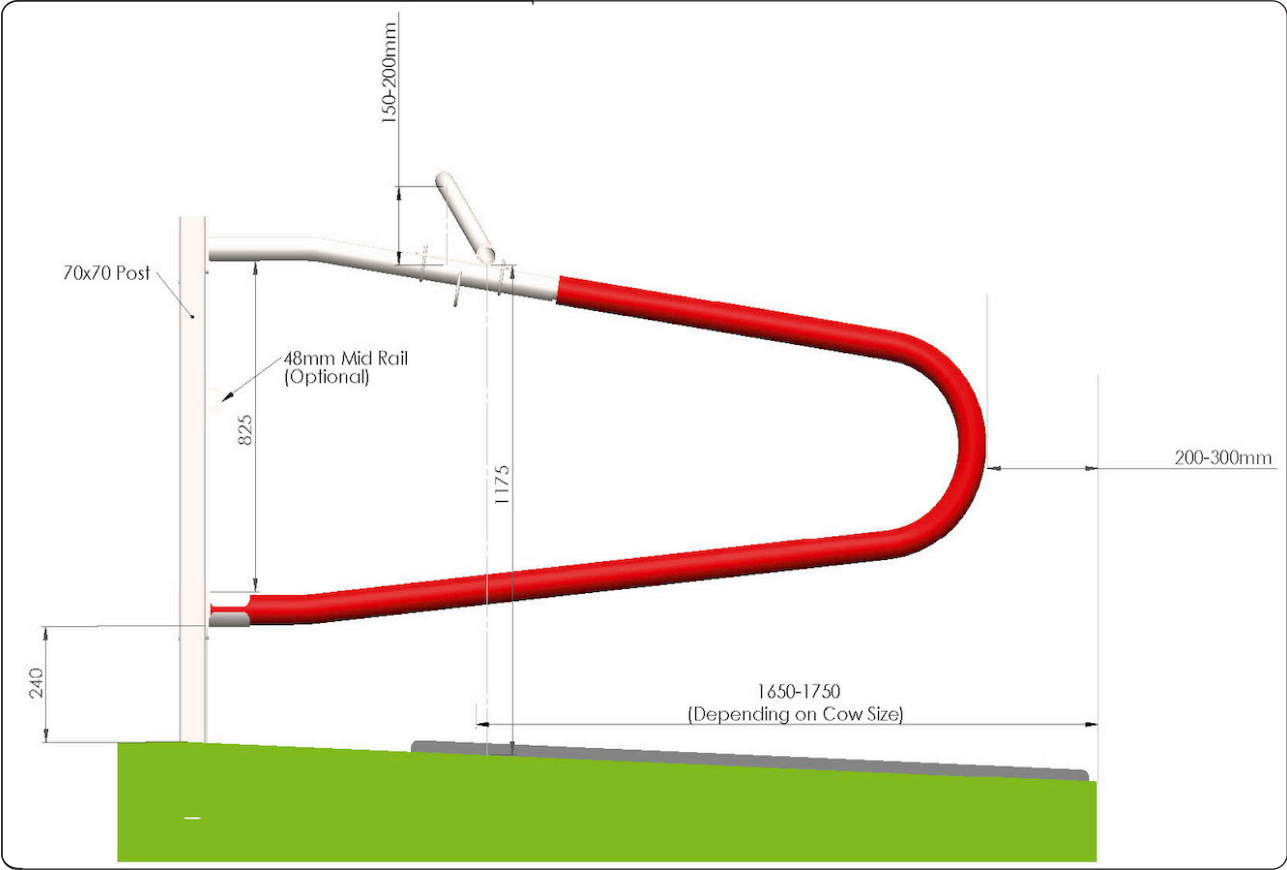
6ft 6in

6ft 9in

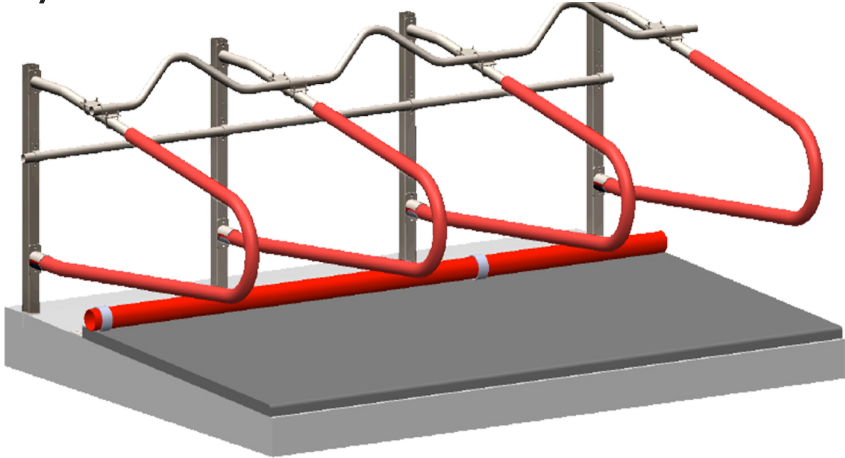




# TECHNICAL SPECIFICATIONS



## Hybrid Flex Cubicle Installation



Each loop is mounted directly on a box post. (Mid-rail to prevent walk through optional extra)

Transport and installation are simplified as there are fewer long rails necessary.

The same mounting brackets are used for both single and double rows.



Fixed Bracket 76mm



3 U-Bolt Headrail Clamp





## JERSEY FLEX CUBICLE

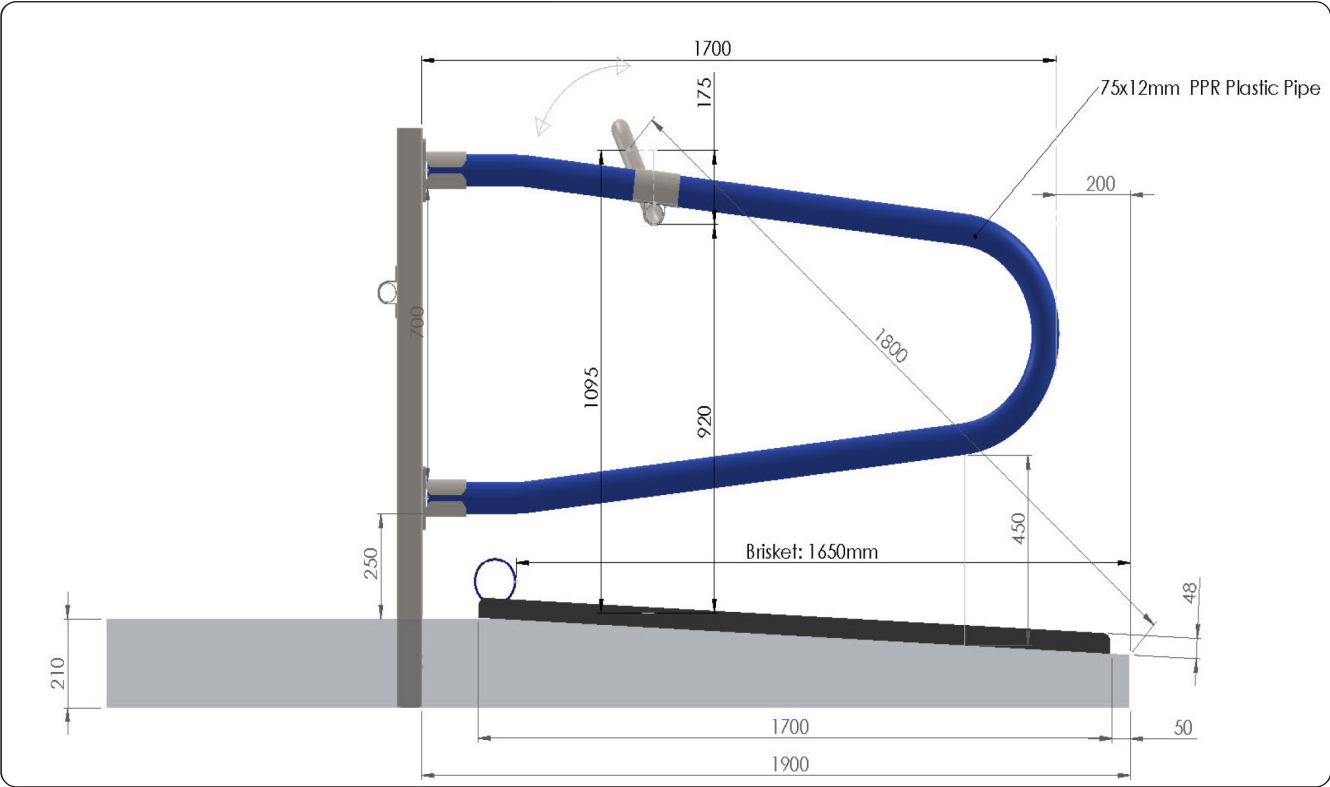
The Jersey Flex Cubicle is the only flexible cubicle specifically designed for all the specifications required for the Jersey cow.

- ✓ Slight flex improves comfort without encroaching on adjacent spaces.
- ✓ Our Zig Zag Neck Rail is custom made to suit the cubicle centres.
- ✓ Improved comfort leads to reduced healthcare and veterinary costs.
- ✓ The Jersey Flex Cubicle is post mounted and will work in new and retro-fit jobs.
- ✓ The Jersey Flex is a full continuous plastic loop preventing sores and lesions in cattle.

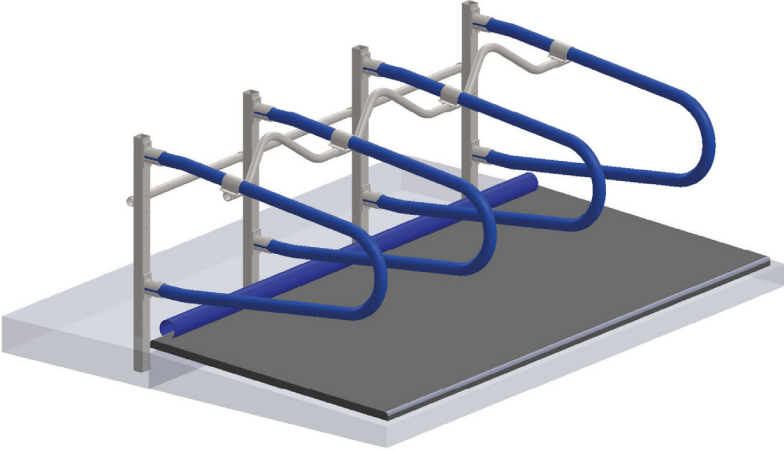




# TECHNICAL SPECIFICATIONS



## Jersey Flex Cubicle Installation



Each loop is mounted directly on a box post. (Mid-rail to prevent walk through optional extra)

Transport and installation are simplified as there are fewer long rails necessary.

The same mounting brackets are used for both single and double rows.



Fixed Bracket 76mm



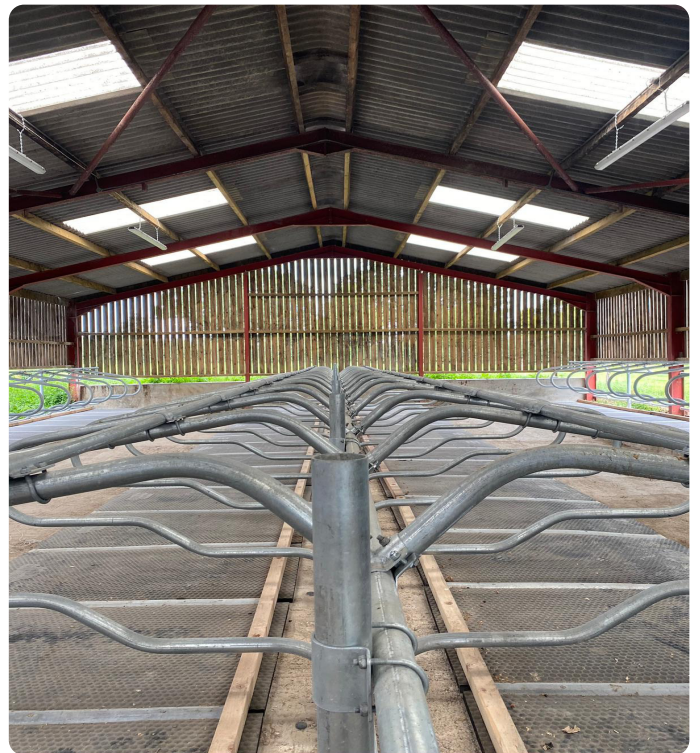
Zig-Zag Neck Rail





The Super Space Cubicle provides extra comfort for larger animals. It features a post and rail system and has become a very popular solution since its development in 2014.

- ✓ Increased cow comfort, especially for larger animals.
- ✓ Bottom support rail is positioned away from the animal's lunge zone.
- ✓ Higher neck rail provides more space for your cows.
- ✓ Post & Rail system allows for quick, easy installation.
- ✓ Available in single or head to head rows.



**Sizes Available**

5ft 9in    6ft    6ft 3in    6ft 6in    6ft 9in    7ft







Our Calf & Heifer Cubicles provide fantastic intermediate accommodation for young stock, ensuring that they are trained to lie in a cubicle bed early in life.



- ✓ Provides a high level of comfort.
- ✓ Support rails prevent walk through.
- ✓ Easy to adjust the height and width of the cubicle.
- ✓ Post & Rail system allows for quick, easy installation.
- ✓ Available in single or head to head rows.

### Sizes Available

3ft 6"	3ft 9"	4ft	4ft 3"	4ft 6"	4ft 9"	5ft	4ft 3"	4ft 6"	4ft 9"	6ft
--------	--------	-----	--------	--------	--------	-----	--------	--------	--------	-----

## Advised Cubicle Measurements

Age in Months	Min. Bed length single row against wall	Min. bed length head to head row	Cubicle width centre to centre	Edge to kerb to back of cubicle
> 22 months	7 – 8ft (2150 – 2450mm)	14 – 15 ft (4300 – 4600mm)	44" (1150mm)	10" (250mm)
16-22 months	7ft (2150mm)	14ft (4300mm)	41" (1050mm)	8" (200mm)
10 - 16 months	7ft (2150mm)	13ft (4000mm)	37" (950mm)	8" (200mm)
5 - 12 months	6ft 3in (1900mm)	12ft 6in (3850mm)	33" (850mm)	6" (150mm)
Up to 5 months	5ft 3in (1600mm)	10ft 6in (3850mm)	28" (700mm)	6" (150mm)





## SHEETED END PANEL

We make sheeted end panels suitable for single and head-to-head cubicle beds. They are hot dipped galvanised and the neck rail can be attached onto them.



## BRISKET PIPE

Brisquet pipe has become a very popular feature of cubicle beds as they position the cow correctly, reducing bed soiling, and some cows use them to rest one of their front legs on.



## ZIG-ZAG NECK RAIL

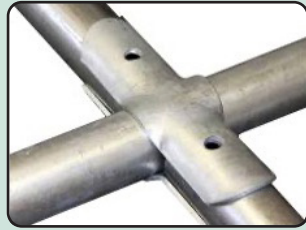
We developed the Zig-Zag Neck Rail primarily for use with the Hybrid Flex Cubicle. However, it is now regularly used with adjustable cantilever cubicles also, with great success.



# CUBICLE FITTINGS



Single Bracket  
(60x60mm / 76x60mm)



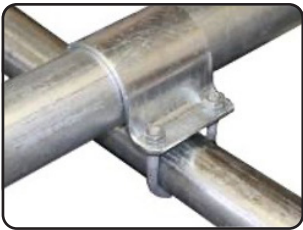
Double Bracket  
(60x60mm / 76x60mm)



2 U-Bolt Headrail  
Clamp



3 U-Bolt Headrail  
Clamp



76mm Post Clamp



1-Bolt T Clamp  
(42x42mm / 48x48mm)



Standard Headrail  
End



Adjustable  
Headrail End



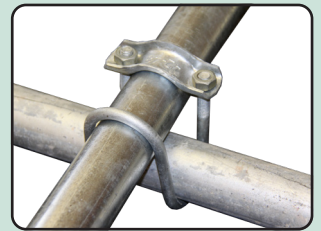
2-D Head to Head  
V Bracket



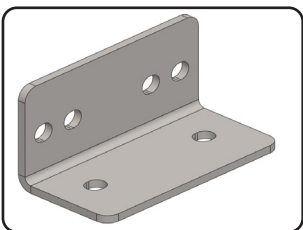
Cross-over Clamp  
(48mm / 60mm / 76mm)



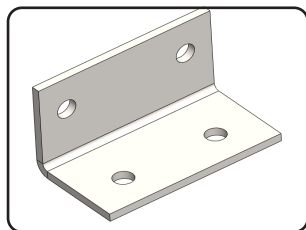
Tube Grip  
(42x42mm)



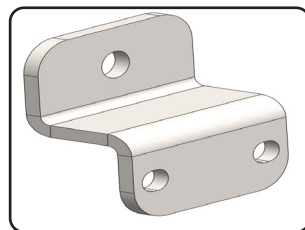
Wire Clamp  
(42x42mm)



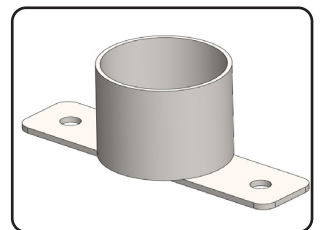
Large RSJ Angle



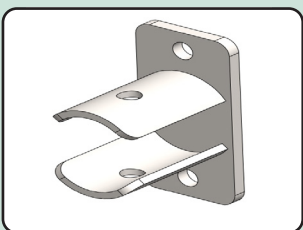
RSJ Angle



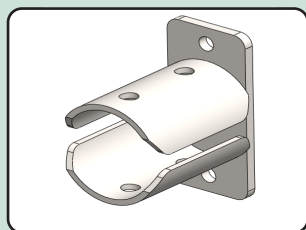
Hat Bracket  
(60mm/76mm)



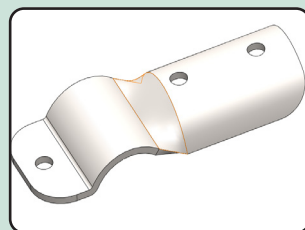
Brisket Pipe End



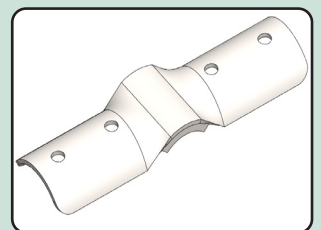
Fixed Bracket  
(60mm)



Fixed Bracket  
(76mm)  
Hybrid



Single Clamp  
(60x75)  
Hybrid



Double Clamp  
(75x60x75)  
Hybrid





## SWINGING COW BRUSH

The Swinging Cow Brush is a maintenance free cow brush that allows the cattle to brush their back and sides as they please, improving overall animal health and total milk yield.

- ✓ Does not require electricity, which makes it virtually maintenance free, as well as simplifying the installation process.
- ✓ Brush arm rotates, which allows the animal to scratch their back from under it.
- ✓ Keeps animals' hair clean, removing dirt, dead hairs and dead skin.
- ✓ Provides a stimulus for the animals.
- ✓ Allows them to brush their back and sides as they please.
- ✓ Self brushing has been proved to be beneficial for the physical and mental wellbeing of animals.







## ELECTRIC COW BRUSH

The Electric Cow Brush is a very popular new product that starts to rotate once cattle come in to contact and swings freely in all directions and hits them hard to reach places.



- ✓ Cleans cattle from dirt and accelerates blood circulation and skin quality.
- ✓ The electric cow brush starts to rotate on contact and swings freely in all directions.
- ✓ Provides a stimulus for the animals and improves overall cow comfort with a direct positive effect on animal health and total milk yield.
- ✓ Allows them to brush their back and sides as they please.
- ✓ Self brushing has been proved to be beneficial for the physical and mental wellbeing of animals.









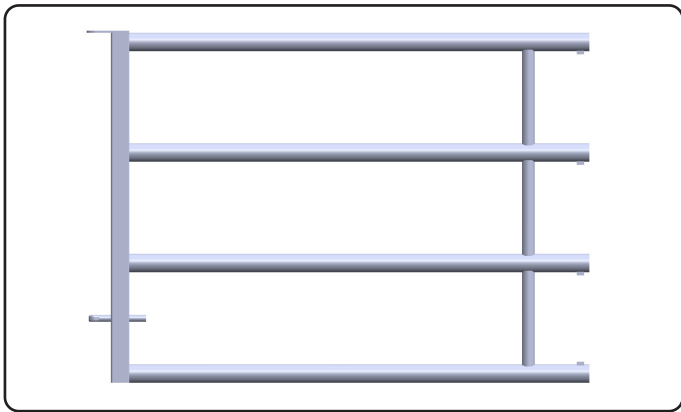


# GATES

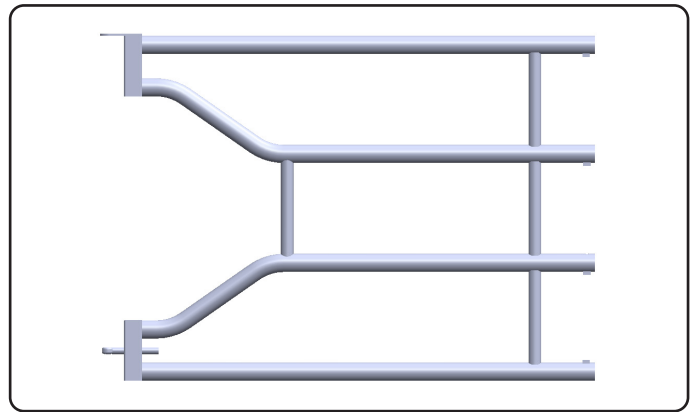




### 4 Bar Backs

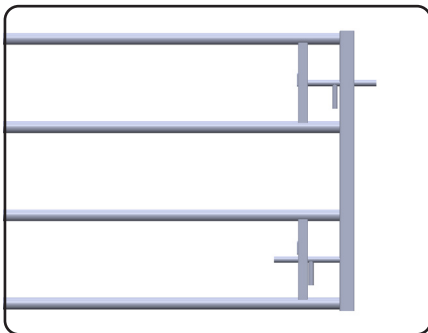


Standard 4 Bar Back (0.5m - 5.5m)

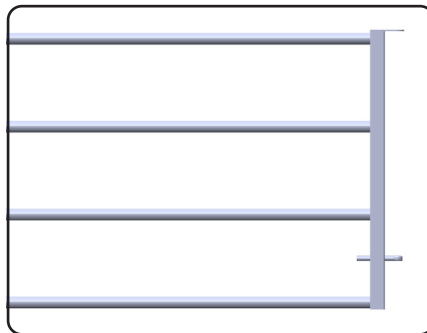


4 Bar Drinker Back (1.5m/2.5m/3.5m)

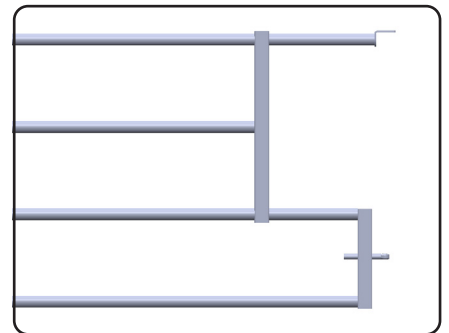
### 4 Bar Fronts



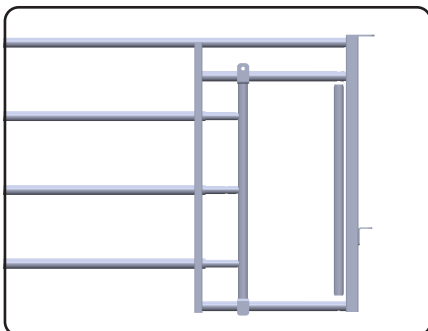
Latch Front (1.5m/2.5m)



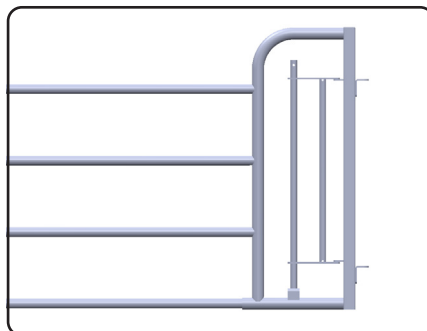
Panel Front (1.5m)



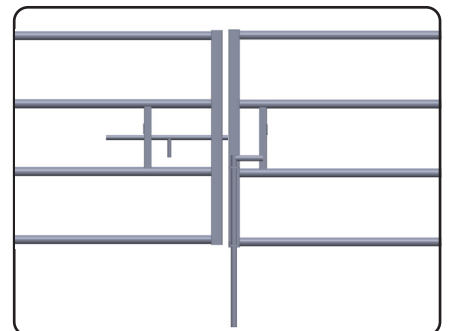
Drinker Front (1.5m)



Calf Creep Front (1.8m)



Man Escape Front (1.8m)



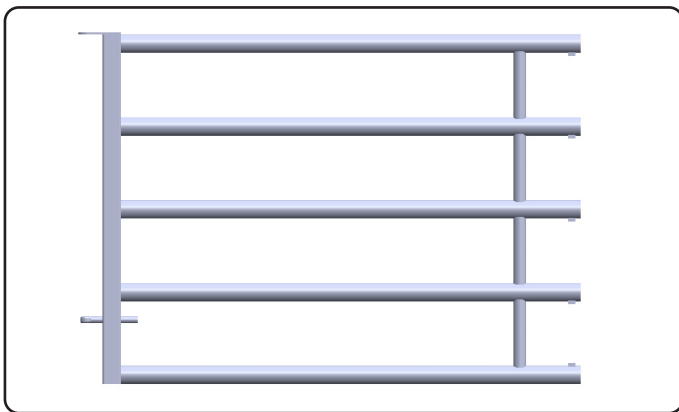
4 Bar Gate Joining Set



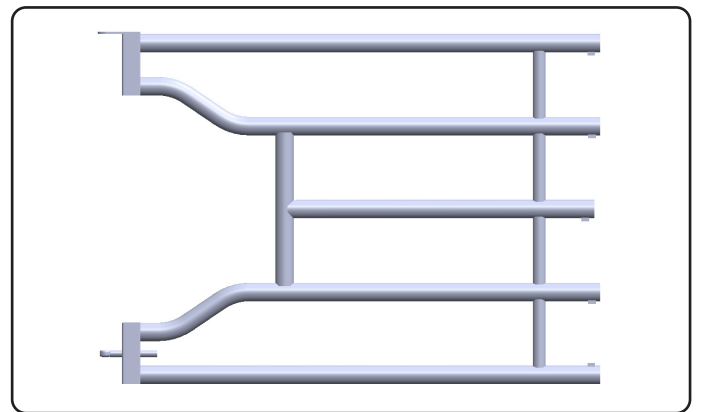


**5 BAR DIVIDING GATES (3FT - 22FT)**

**5 Bar Backs**

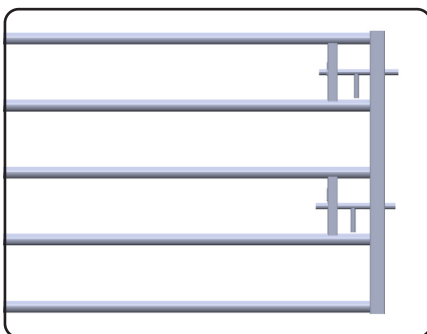


Standard 5 Bar Back **(0.5m - 5.5m)**

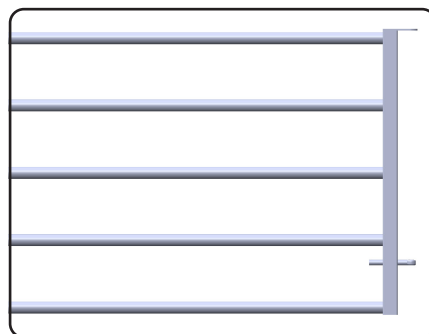


5 Bar Drinker Back **(1.5m/2.5m/3.5m)**

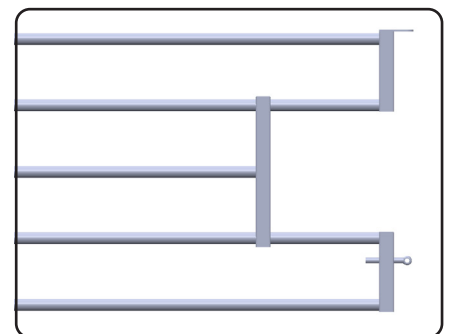
**5 Bar Fronts**



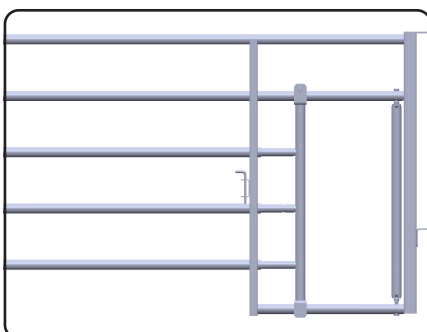
Latch Front **(1.5m/2.5m)**



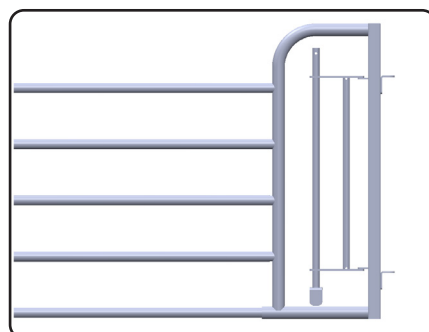
Panel Front **(1.5m)**



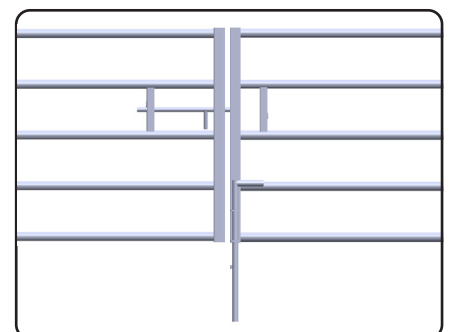
Drinker Front **(1.5m)**



Calf Creep Front **(1.8m)**



Man Escape Front **(1.8m)**



5 Bar Gate Joining Set



## DIVIDING GATES

- ✓ Available in a range of lengths to span from 7ft to 19ft.
- ✓ Multiple hanging options including our specially made mounting brackets here.
- ✓ Easy to move to change divisions.



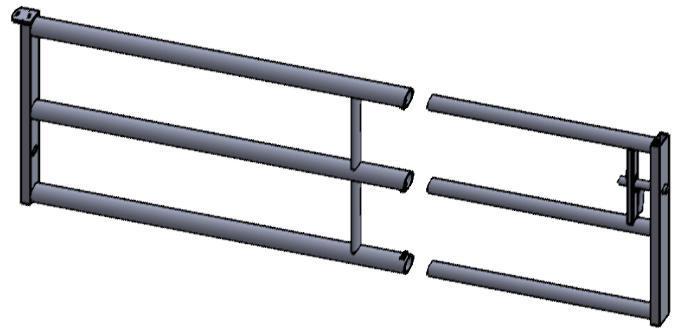
Dimensions	
<b>Length</b>	2500mm - 5500mm
<b>Spacing:</b>	300mm
<b>Outside Diameter:</b>	60mm

## 2 BAR PANEL

The 2 Bar Dividing Panel is commonly used in a cubicle house. They can be mounted on the cubicles as above or hung using posts and hangers.

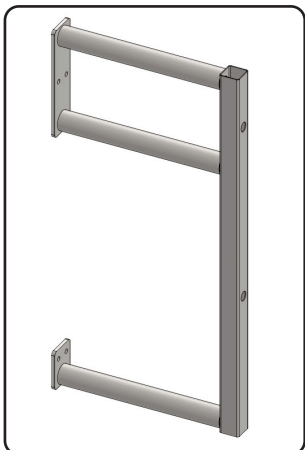
- ✓ Available in a range of lengths to span from 3ft to 19ft.
- ✓ Comes in backs and fronts - similar to our 4 & 5 bar dividing gates.
- ✓ Slight adjustment in length to suit opening.

Dimensions	
<b>Length</b>	1000mm - 5500mm
<b>Spacing:</b>	312mm
<b>Gate Height:</b>	780mm



## 3 BAR LATCH GATE

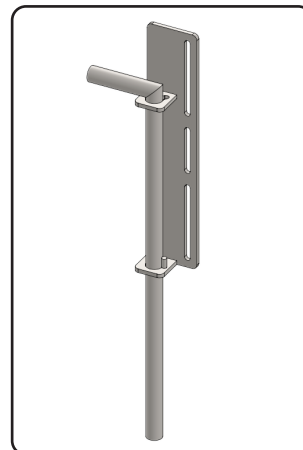
## OPTIONS



5 Bar Drinker Frame  
**(For small drinkers)**



4 Bar Drinker Frame  
**(For large drinkers)**



Bolt on Drop Bar

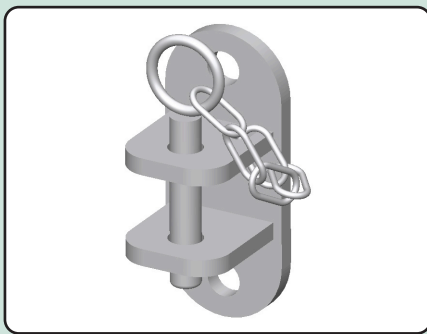


Bolt on Wheel  
**(48mm upright)**

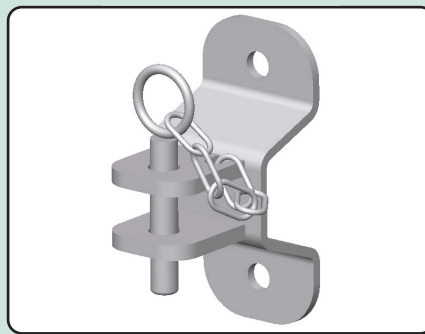




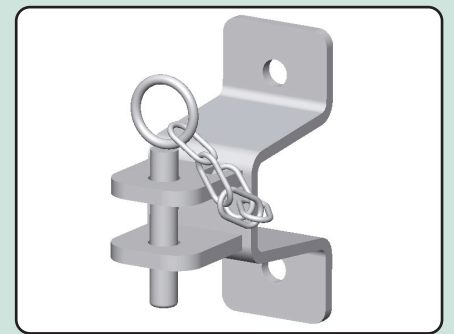
HANGERS & RECEIVERS



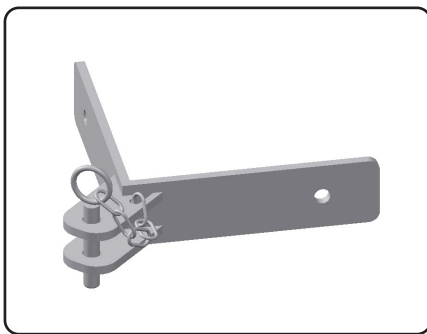
Standard Hanger



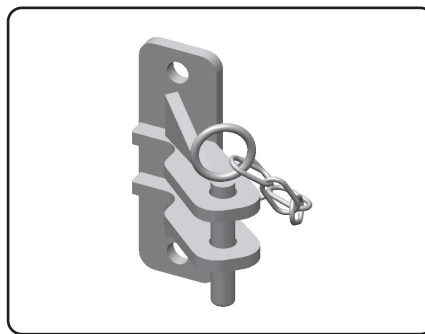
Spacer Hanger  
(50mm step)



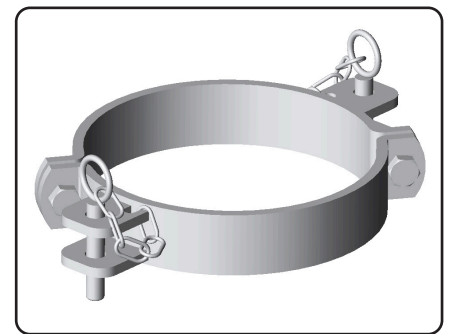
**BIG** Spacer Hanger  
(75mm step)



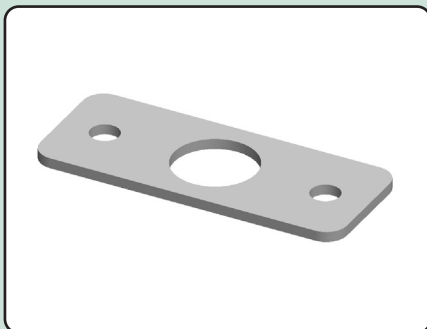
Corner Hanger



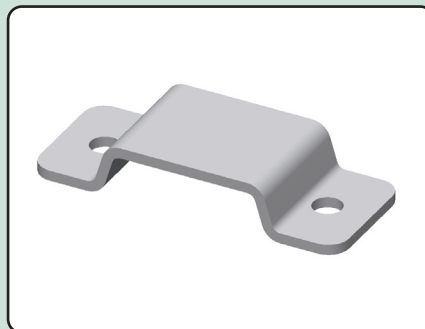
Angle Hanger



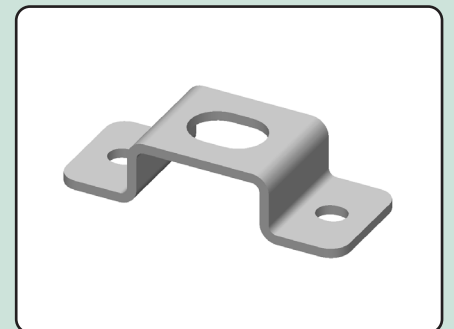
Bolt-on Pin & Chain Hanger  
(1, 2 & 3 Way)



Wall Receiving Bracket



Receiving Bracket Flange



Web Latch Receiver



- ✓ Rope pull latching system is very simple and safe to open and close.
- ✓ Posts can be floor mounted or fixed to walls either side (as shown).
- ✓ Available in Lengths up to 5m (16ft6).



Dimensions	
<b>Gate Height:</b>	900mm
<b>Clearance when open:</b>	2800mm
<b>Total Height:</b>	3750mm

## GUILLOTINE GATE

Guillotine Gates are designed to travel vertically with ease due to a counter balance within the gate support. They are used in place where a standard gate is not suitable.

- ✓ Gate rotates vertically 180° and is held in place using pins.
- ✓ Posts can be floor mounted or fixed to walls either side.
- ✓ Available in Lengths up to 5m (16ft6).



Dimensions	
<b>Gate Height:</b>	900mm
<b>Clearance when open:</b>	2300mm
<b>Total Height:</b>	3250mm

## UP & OVER GATE

The Up & Over Gate are designed to rotate vertically to allow stock to pass underneath. They are used in places where a standard hanging gate is not possible.

- ✓ Gate rotates vertically 90° and is held in place using pins.
- ✓ The concealed gas strut makes it easy to open & close - just like the boot of a car.
- ✓ Available in Lengths up to 6m (19ft8).



Dimensions	
<b>Lengths available:</b>	3000mm - 4500mm 4500mm - 6000mm

## BUNGEE GATE

The Bungee Gate is a suitable option where a standard gate won't swing but height is not an issue. It swings up out of the way and can rotate on its hangers to close in multiple positions.



- ✓ Available in a range of lengths to span from 3ft to 19ft.
- ✓ Made with 5no. 42mm CHS rails and a 40 x 40mm box upright at hanging end.
- ✓ Gates are extendable by up to 3ft.



Dimensions	
<b>Length:</b>	1000mm - 5500mm
<b>Spacing:</b>	182.5mm
<b>Height:</b>	940mm

## ADJUSTABLE FIELD GATES

- ✓ Available in a range of lengths 8ft to 16ft.
- ✓ Made with 6no. 42mm CHS rails and 40mm x 40mm box uprights.
- ✓ Irregular spacings are closer at the bottom and wider towards the top.



Dimensions	
<b>Lengths:</b>	8ft, 9ft, 10ft, 11ft, 12ft, 13ft, 14ft, 15ft, 16ft
<b>Height:</b>	1205mm

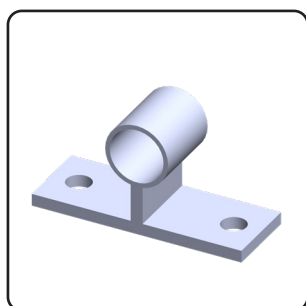
## 6 BAR SOLID FIELD GATES

- ✓ Available in three different lengths to span 12ft, 14ft or 16ft.
- ✓ Made with 5no. 42mm CHS rails and 40mm x 40mm box uprights.
- ✓ 50mm x 50mm mesh is used.



Dimensions	
<b>Length:</b>	12ft, 14ft, 16ft
<b>Spacing:</b>	248.75mm
<b>Height:</b>	1205mm

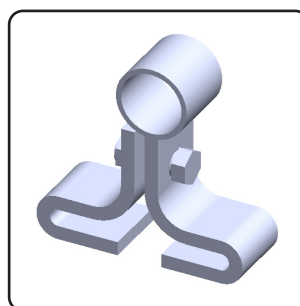
## FULLY MESH FIELD GATES



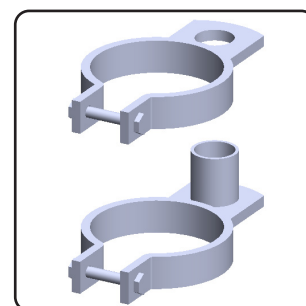
Wall Field Gate Hangers



Threaded Bar Hangers



RSJ Clamp On Hangers



Wrap Around Hangers









# FEED BARRIERS

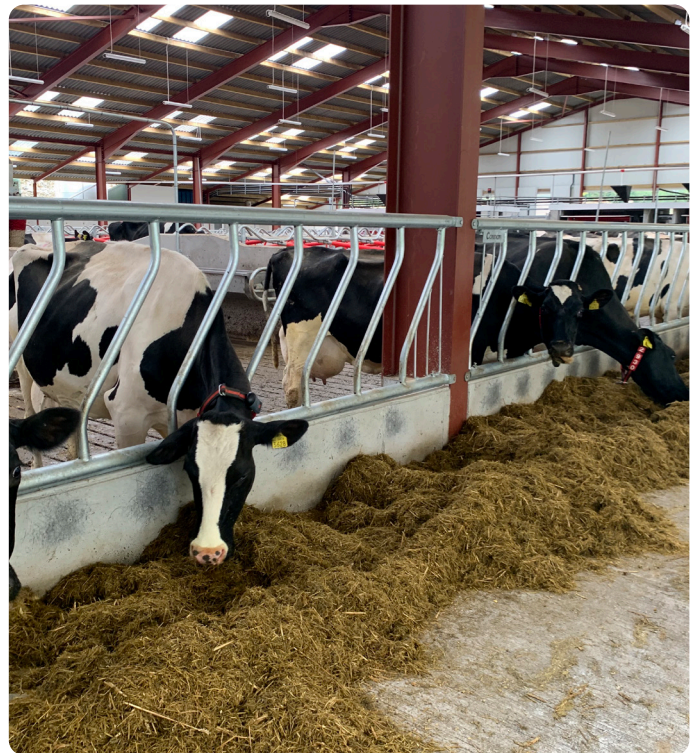




## FIXED DIAGONAL BARRIER

Condon Diagonal Barriers are designed to prevent feed being dragged into the penning area. The design also reduces calves escaping through the barrier.

- ✓ Barriers are supplied with four telescopic adjustable ends.
- ✓ The standard 15ft9 (4.8m) bay allows for 10 head spaces (4.515m Barrier is used).
- ✓ Barriers are manufactured in a wide range of sizes.
- ✓ Z-shaped design minimises bullying and feed wastage.



Standard Sizes			
<b>60mm:</b>	4.400m	<b>76mm:</b>	3.000m
	4.515m		4.300m
			4.400m
			4.515m
			5.800m







## TIMBER GATE BARRIER

The Timber Gate Barrier is designed to be able to hinge open completely to give full access to the pen.



- ✓ Heavy Box Section at the ends prevent barrier from sagging when opened.
- ✓ Latches are positioned in such a way so as to ensure animal safety.
- ✓ The standard 15ft9 (4.8m) bay allows for ten head spaces (4.5m Barrier is used).
- ✓ Barriers are manufactured in a wide range of sizes.
- ✓ Z-shaped design minimises bullying and feed wastage.

### Standard Sizes

<b>60mm:</b>	4.530m	<b>76mm:</b>	4.400m
	4.580m		4.530m
			4.580m







## SWINGING BARRIER

Our Swinging Diagonal Barrier is designed to be able to hinge open above a feed wall or feed trough. The box section at either end adds the necessary strength for the barrier to swing.

- ✓ Heavy Box Section at the ends prevent barrier from sagging when opened.
- ✓ Latches are positioned in such a way so as to ensure animal safety.
- ✓ Eyebolts on the hanging end allow slope and distance to be adjusted.
- ✓ Barriers are manufactured in a wide range of sizes.
- ✓ Z-shaped design minimises bullying and feed wastage.



### Standard Sizes

<b>60mm:</b>	4.530m	<b>76mm:</b>	4.400m
	4.580m		4.530m
			4.580m







## HEADLOCK BARRIER

Headlocking barriers are designed to suit a wide range of stock. The safety of the animal is ensured while allowing the farmer to maintain better management of the herd.

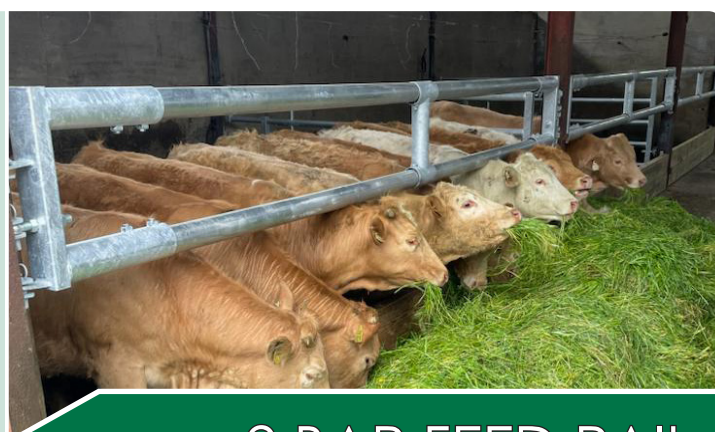
No. of Spaces	Opening Size	Barrier Length
1 Space	1 m	720 mm
2 Space	1.67 m	1380 mm
3 Space	2.1 m	1814 mm
4 Space	3 m	2620 mm
5 Space	3.65 m	3375 mm
6 Space	4 m	3720 mm
7 Space	4.6 m	4280 mm
7 Space	4.8 m Standard	4480 mm
8 Space	5 m	4720 mm
9 Space	6 m	5720 mm

- ✓ Anti Choke mechanism allows the animal to be released quickly.
- ✓ Control Lever is connected to a row of Headlocks.
- ✓ Can release all or one at a time.
- ✓ Head width can be adjusted.
- ✓ Lower Cover prevents smaller animals getting caught accidentally.
- ✓ Very robust & durable.

- ✓ 88.9mm Horizontal Rail c/w 101mm End & Centre Sockets.
- ✓ Hangers are off centre on sides to allow for 2 height settings.
- ✓ Centre eyebolt allows easy adjustment.

### Dimensions

<b>Length:</b>	Up to 6m
<b>Rail Diameter:</b>	88.9mm
<b>Height:</b>	500mm



## 2 BAR FEED RAIL









# FEEDERS & DRINKERS



- ✓ Available in 2 standard sizes - 4ft & 6ft. Capacities of 150L & 225L respectively.
- ✓ Complete with a Standard Red Ballcock and 2 inch release valve.
- ✓ Slimline version also available.



Dimensions	
<b>Length:</b>	1320mm/1980mm
<b>Width:</b>	510mm
<b>Depth:</b>	400mm

## WALL MTD. DRINKER

The Wall Mounted Drinker's lever drain valve ensures that the drinker can be quickly emptied and cleaned. Available **Hot Dipped Galvanised** or in **Stainless Steel**.

- ✓ Available in 2 standard sizes - 4ft & 6ft. Capacities of 157.5L & 247.5L respectively.
- ✓ The tip-over facility ensures that the drinker can be quickly emptied and cleaned.
- ✓ Simple mounting system.

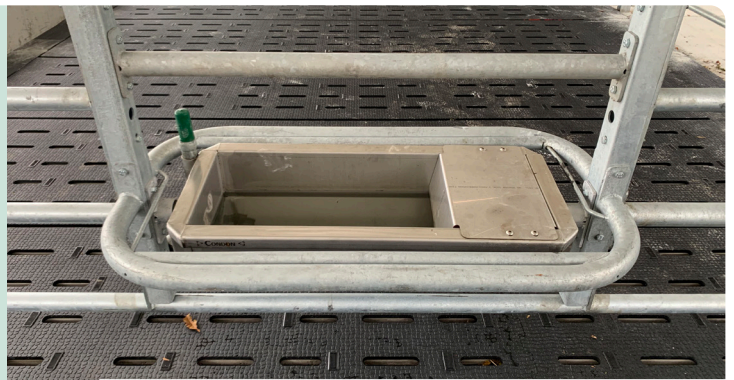


Dimensions	
<b>Length:</b>	1320mm/1980mm
<b>Width:</b>	510mm
<b>Depth:</b>	400mm

## TIP OVER DRINKER

Our Tip Over Drinker has the advantage of being even quicker and easier to empty - just pull the lever as you walk past. Available **Hot Dipped Galvanised** or in **Stainless Steel**.

- ✓ Stainless Steel Water Trough – 65 Litres Capacity Approx.
- ✓ All water fittings are hidden with the gate and drinker.
- ✓ Fast flow Ball Valve Supplied.



Dimensions	
<b>Length:</b>	1320mm
<b>Protective Rail:</b>	60mm CHS
<b>Capacity:</b>	65L Approx.

## CENTRALISED DRINKER GATE

The Centralised Tip-Over Drinker is a great solution to providing fresh, clean water to adjacent cattle pens. The tip-over function makes it very simple to empty and keep clean.



- ✓ Tip-over release handle ensures quick emptying & Cleaning
- ✓ Complete with standard 1/2 brass ballcock valve.
- ✓ Stainless Steel Finish.

#### Dimensions

<b>Length:</b>	490mm
<b>Width:</b>	660mm
<b>Depth:</b>	200mm
<b>Capacity:</b>	20L



### SUPER STAINLESS TIP-OVER DRINKER

The **Super stainless Tip-over drinker**, ensures quick emptying & cleaning. Supplied with a 2 bar surround for increased protection & Std 1/2" Brass Ballcock valve.

- ✓ Complete with 48 x 3mm CHS 2 Bar Surround.
- ✓ Complete with a Standard Red Ballcock and drainage outlet.
- ✓ Available Hot Dipped Galvanised or stainless steel.

#### Dimensions

<b>Length:</b>	470mm
<b>Width:</b>	660mm
<b>Depth:</b>	200mm
<b>Capacity:</b>	21L



### SMALL DRINKER

The Condon Small Heavy-Duty Drinker is easily recognised for its robust design for added protection against damage by machinery and larger animals. **Available In stainless Steel.**

- ✓ Complete with a Standard Ballcock and fittings.
- ✓ Complete with 1.5" drainage outlet on underside.

#### Dimensions

<b>Length:</b>	370mm
<b>Width:</b>	350mm
<b>Depth:</b>	190mm
<b>Capacity:</b>	7L



### COMPACT DRINKER

The Condon Compact Drinker offers similar toughness with a smaller design. The curved design means no sharp edges, ensuring safety for your animals. **Also available in Stainless Steel.**



- ✓ Standard size is 2250mm (7ft 6"). Its capacity is approx. 130L.
- ✓ Reduces amount of wasted feed by raising it off the passage.
- ✓ Hot Dipped Galvanised.



Dimensions	
<b>Length:</b>	2250mm
<b>Width:</b>	400mm
<b>Depth:</b>	187.5mm

## BARRIER TROUGH

Our Barrier Troughs do a very similar job to our calf troughs (page 46). This trough is bigger and heavier, making it more suited towards larger animals, hung on the outside of a feed barrier.

- ✓ Frame is fully Hot Dipped Galvanised.
- ✓ Folded Galvanised Sheet Tray.
- ✓ 8ft Long.

Dimensions	
<b>Length:</b>	2480mm
<b>Width:</b>	420/840mm
<b>Tray Depth:</b>	150mm



## 8FT SINGLE/DOUBLE TROUGH

The Standard Single/Double Trough is perfect for outdoor feeding. The material is entirely galvanised to ensure protection against the elements.

- ✓ Wheels and standard trailer hitch supplied as standard.
- ✓ 22 Head spaces.
- ✓ Tailgate hinges open.

Dimensions	
<b>Length:</b>	2450mm
<b>Width:</b>	1500mm
<b>Height:</b>	1560mm



## MINI FEED TRAILER

Our New Mini Feed Trailer is the perfect solution to quick and efficient transportation from field to field. Tailgate hinges open, sloped sides allow access to all the feed.



- ✓ Controls the feed rate.
- ✓ Large lid allows it to be filled using a loader when in situ.
- ✓ Green cover deters pests stealing food.



Dimensions	
<b>Length:</b>	3000mm
<b>Width:</b>	955mm
<b>Depth:</b>	1120mm

## 1.5T CONTROLLED FEEDER

The 1.5 Tonne Controlled Feeder is a very versatile product, suitable for feeding all sizes of stock, from calves to finishing bulls. It is very portable and gives feeding access on both sides.

- ✓ Available with wheels and a drawbar or pallet fork attachments (pictured).
- ✓ Large lid allows it to be filled using a loader when in situ.
- ✓ Green cover deters pests stealing food.



Dimensions	
<b>Length:</b>	3000mm
<b>Width:</b>	955mm
<b>Depth:</b>	1120mm

## 1.5T AD-LIB FEEDER

The 1.5 Tonne Ad-Lib Feeder is a very versatile product, suitable for feeding all sizes of stock, from calves to finishing bulls. It is very portable and gives feeding access on both sides.

- ✓ Tail gate hinges open. Sloped sides allow access to all of the silage.
- ✓ Feeding height is 600mm (2 ft).
- ✓ Hot dipped galvanised with treated timber floor



Dimensions	
<b>Length:</b>	4800mm
<b>Width:</b>	1530mm
<b>Height:</b>	1800mm

## SILAGE FEED TRAILER

The Mobile Silage Feeder brings the benefits of diagonal feeding barriers outdoors. The design helps to prevent bullying and stops large amounts of feed being dragged out of the feeder.



- ✓ Adjustable legs allow the bin to be raised up to 1m off the ground.
- ✓ Lid slides open half way and then hinges up, only opening to half its height.
- ✓ Pallet fork attachments and sight glass.

Dimensions

<b>Height:</b>	2450-2650mm
<b>Width:</b>	1250mm
<b>Depth (Front to Back):</b>	1640mm



1 TONNE MEAL BIN

The Condon 1 Tonne Meal Bin is a very popular feed storage option for farmers. This is primarily due to its compact size and portability.

- ✓ Adjustable legs allow the bin to be raised up to 1m off the ground.
- ✓ Lid opens easily with the help of gas struts, similar to those on the boot of a car.
- ✓ Pallet fork attachments and sight glass.

Dimensions

<b>Height:</b>	2450-2650mm
<b>Width:</b>	2560mm
<b>Depth (Front to Back):</b>	1400mm



2 TONNE MEAL BIN

Our Brand New 2 Tonne Meal Bin has received a lot of interest so far. It offers a good balance of a large capacity but still a compact size and very portable.

- ✓ Adjustable legs allow the bin to be raised off the ground.
- ✓ Can be filled using twin blow in pipes or from the lid on top using a loader.
- ✓ Pallet fork attachments and sight glass.

Dimensions

<b>Height:</b>	3000mm
<b>Width:</b>	2500mm
<b>Depth (Front to Back):</b>	2500mm



5 TONNE MEAL BIN

Our 5 Tonne Meal Bin strikes the perfect balance between capacity and form factor. For a bin of its size, it takes up a lot less space than our larger options. **Capacity: 7.9m<sup>3</sup>**



- ✓ Adjustable legs allow the bin to be raised off the ground.
- ✓ Can be filled using twin blow in pipes or from the lid on top using a loader.
- ✓ Pallet fork attachments and sight glass.

#### Dimensions

<b>Height:</b>	3000mm
<b>Width:</b>	3000mm
<b>Depth (Front to Back):</b>	2500mm



## 8 TONNE MEAL BIN

The 8 Tonne Meal Bin offers great flexibility to the farmer, it is easy to fill with either a front loader or through the twin blow in pipes. **Capacity:** 12.5m<sup>3</sup>

- ✓ Adjustable legs allow the bin to be raised off the ground.
- ✓ Can be filled using twin blow in pipes or from the lid on top using a loader.
- ✓ Pallet fork attachments and sight glass.

#### Dimensions

<b>Height:</b>	3500mm
<b>Width:</b>	3000mm
<b>Depth (Front to Back):</b>	2500mm



## 10 TONNE MEAL BIN

Our 10 Tonne Meal Bin possesses all the same features as the 8 Tonne, the only difference is the bin is taller, allowing you to fit more in. **Capacity:** 15.6m<sup>3</sup>

- ✓ Adjustable legs allow the bin to be raised off the ground.
- ✓ Can be filled using twin blow in pipes or from the lid on top using a loader.
- ✓ Pallet fork attachments and sight glass.

#### Dimensions

<b>Height:</b>	4000mm
<b>Width:</b>	3000mm
<b>Depth (Front to Back):</b>	2500mm



## 12 TONNE MEAL BIN

The largest of our Meal Bins is the 12 Tonne. Up to 5m in height when its legs are fully extended, this bin can also be filled by the twin blow in pipes or with a loader. **Capacity:** 18.75m<sup>3</sup>





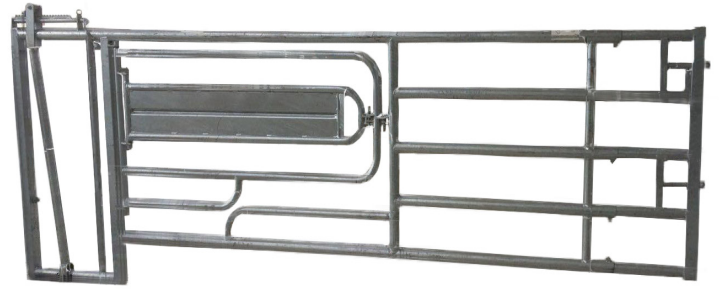




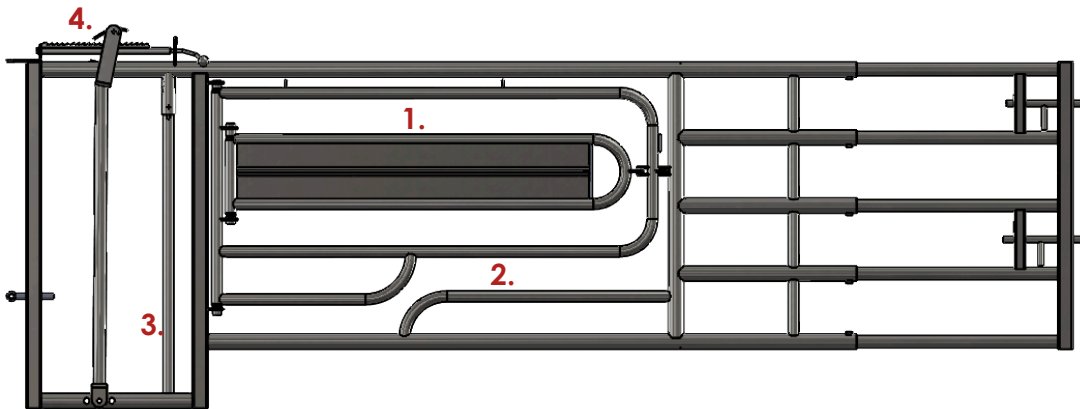
# CALF EQUIPMENT



- ✓ Headlock is attached to Calving Support Gate.
- ✓ Spring Loaded Release bar ensures safety for your animals.
- ✓ Provides safe control of cow during calving.
- ✓ Centre gate opens independently to perform caesarean.
- ✓ Available in sizes from 11ft to 16ft.

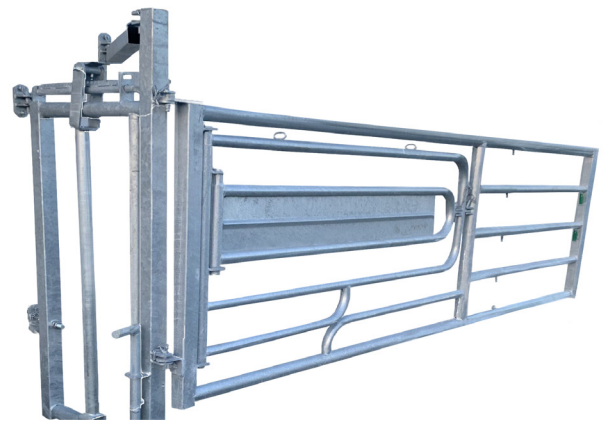


## 3 IN 1 CALVING GATE

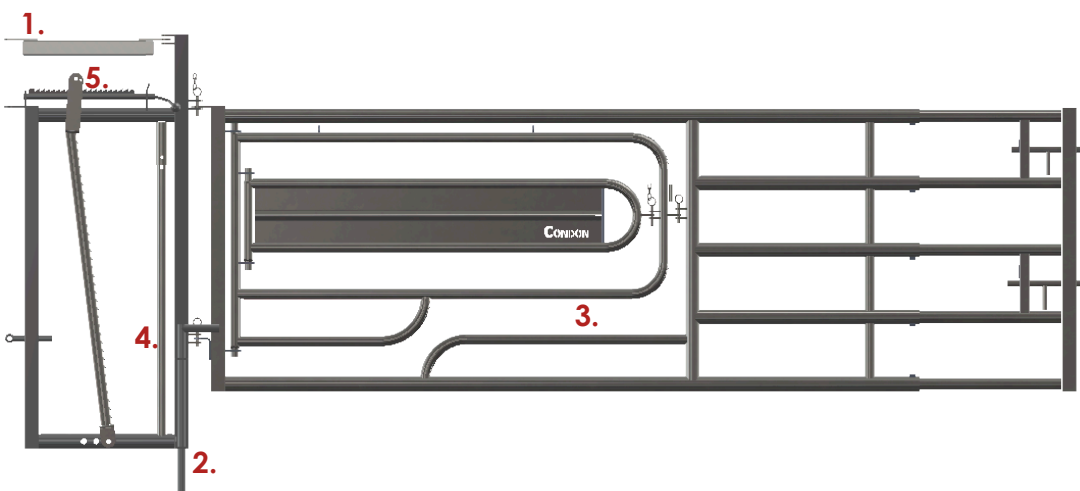


1. Caesarean gate.
2. Gives calf access to feed.
3. Spring Loaded Release Bar.
4. Rope operated ratchet headlock.

- ✓ Headlock is separate to main gate and both can be folded against the wall.
- ✓ Dropbar and Overhead Support Arm on Headlock eliminate the need for a post.
- ✓ The main gate hinges on headlock, which allows greater control in positioning the animal.
- ✓ Centre gate opens to perform caesarean.
- ✓ Available in sizes from 11ft to 16ft.



## SUCKLER CALVING GATE



1. Overhead Support Arm.
2. Dropbar into ground.
3. Gives calf access to feed.
4. Spring Loaded Release Bar.
5. Rope operated ratchet headlock.



- ✓ Hinges on headlock or post, which allows greater control in positioning the animal.
- ✓ Centre gate opens to perform caesarean if necessary.
- ✓ Middle Gate opens to allow calf to feed.



Dimensions	
<b>Length:</b>	9ft - 13ft
<b>Middle Gate:</b>	1855mm
<b>Height:</b>	1150mm

## CALVING SUPPORT GATE

The Calving Support Gate works alongside a calving gate headlock to ensure a safe calving process for the farmer and the animals.

- ✓ Fully welded, no sheeting screwed on - Easy to clean!
- ✓ 2 height adjustable bucket holders, can be positioned above or below opening.
- ✓ Plastic Slatted Floor.

Dimensions	
<b>Length:</b>	1245mm
<b>Width:</b>	895mm
<b>Height:</b>	1250mm



## INDIVIDUAL CALF PEN

Our Individual Calf Pens are really quick to assemble and dismantle. They come in flat packs share a side with their neighbour, making them easy to transport and store when not needed.

- ✓ Steering Arm also acts as a brake (when down).
- ✓ Sides are removable, back door doubles as a ramp too.
- ✓ Chequer plate floor.

Dimensions	
<b>Length:</b>	1260mm
<b>Width:</b>	770mm
<b>Height:</b>	1335mm



## CALF TRANSPORTER

The Condon Calf Transporter is a lightweight but robust cart, ideal for moving calves around the farm. It is very versatile - its removable sides make it useful for moving just about anything!



- ✓ Made from 40×40 box & 42mm Tubular Steel.
- ✓ 2no. Adjustable Feed Rail supplied as standard.
- ✓ Eyebolts allow slope and distance to be adjusted.
- ✓ Calf Feed Barrier is 1050mm high in total.
- ✓ Access gate is an optional extra.



## CALF FEED BARRIER

Our calf feed barriers are a made to measure solution, suitable for all calf sheds. The adjustable rail means they will continue to cater for your stock as they grow.





- ✓ Available in a range of lengths to span from 3ft to 19ft.
- ✓ Made with 5no. 42mm CHS rails and 40mm x 40mm box uprights.
- ✓ Drinker Front also available.



Dimensions	
<b>Length:</b>	1000mm - 5500mm
<b>Spacing:</b>	182.5mm
<b>Height:</b>	940mm

## CALF DIVIDING GATES

Our Calf Dividing Gates offer the same practicality as our standard 5 Bar Dividing Gates but with lighter rails and smaller spacings, making them ideal for your smaller stock.





- ✓ Vertical bars run down the front of the rack. The sides are sheeted, as shown.
- ✓ Hangs on Feed Barrier or Gate and can be hung back to back.
- ✓ Hot Dipped Galvanised.



Dimensions	
<b>Length:</b>	1200mm
<b>Height:</b>	660mm
<b>Depth:</b>	200mm

## STRAIGHT BAR HAY RACK

The 4ft Hay Rack is the perfect means of feeding younger stock. It hangs on any gate or barrier and its open front allows even the smallest of your calves to feed easily.

- ✓ 2" mesh on the front of the rack with sheeted sides.
- ✓ Hangs on Feed Barrier or Gate and can be hung back to back.
- ✓ Hot Dipped Galvanised.



Dimensions	
<b>Length:</b>	1200mm
<b>Height:</b>	660mm
<b>Depth:</b>	200mm

## MESH HAY RACK

The 4ft Hay Rack is the perfect means of feeding younger stock. It hangs on any gate or barrier and its open front allows even the smallest of your calves to feed easily.

- ✓ Available in 2 standard sizes - 4ft & 6ft. Capacities of approx. 60L and 90L.
- ✓ Hangs on Feed Barrier or Gate and is suitable for feeding milk or meal.
- ✓ Hot Dipped Galvanised.



Dimensions	
<b>Length:</b>	1280/1875mm
<b>Width:</b>	300mm
<b>Depth:</b>	165mm

## CALF TROUGH

The calf trough hangs on any gate or barrier and is suitable for feeding milk or meal to your young stock. It is hot dipped galvanised and available in 2 sizes - 4ft (pictured) & 6ft.



- ✓ Trough folds up for transport. Length when moving is reduced to 20 ft.
- ✓ Drawbar and support leg are hidden when in use.
- ✓ Hot Dipped Galvanised.



Dimensions	
<b>Length:</b>	9m
<b>Width:</b>	450mm
<b>Tray Depth:</b>	150mm

## 30FT MOBILE TROUGH

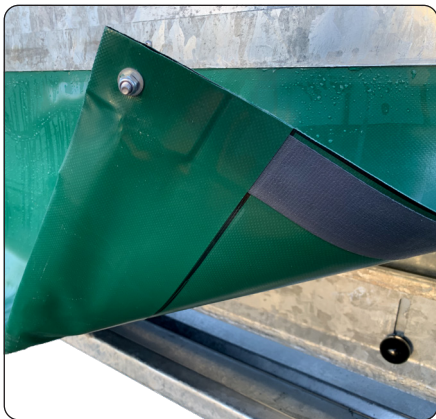


- ✓ Available in 2 standard sizes - 2ft & 4ft. Capacities of 37.5kg & 75kg respectively.
- ✓ Hangs on any type of gate. Suitable for field or shed.
- ✓ Green cover prevents birds getting feed.



Dimensions	
<b>Length:</b>	600mm/1200mm
<b>Width:</b>	550mm
<b>Height:</b>	620mm

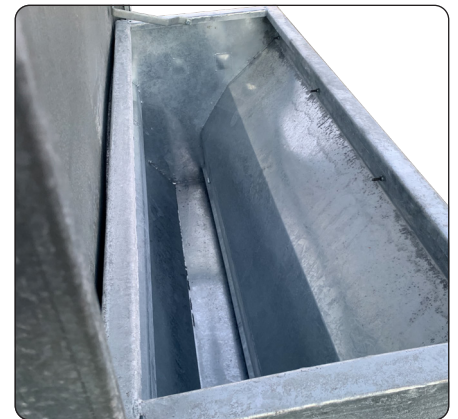
## CALF FEEDER BOX



**Anti-tear Bird Flap**  
Designed to keep pests out!



**Feed Rate Adjuster**  
Gives you full control over the flow of feed



**Internal slopes funnel feed to the front lip**



- ✓ Available 6ft or 8ft in length with removable hinged penning.
- ✓ Movable with a standard 3-point linkage or with front loader pallet forks.
- ✓ 2 Drainage Valves.

Dimensions

<b>Length:</b>	1800mm/2400mm
<b>Creep Area:</b>	1500mm long
<b>Height:</b>	1500mm



CALF CREEP FEEDER



- ✓ Heavy Duty Curtain restricts birds and provide a shelter to the rain.
- ✓ Double Sided Feeding means more calves can eat at the one time,
- ✓ Fully Hot Dipped Galvanised.

Dimensions

<b>Length:</b>	2400mm
<b>Width:</b>	745mm
<b>Height:</b>	1205mm

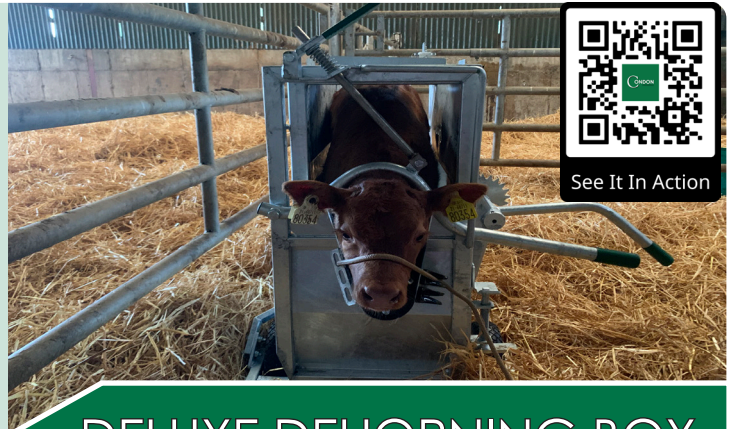


CALF AD-LIB FEEDER





- ✓ Ratchet Push-Up Anti Backing Bar and Ratchet Belly Band hold calf in position.
- ✓ Nose band and spring loaded head locking bar hold head securely in place.
- ✓ Quick Release Front Door.



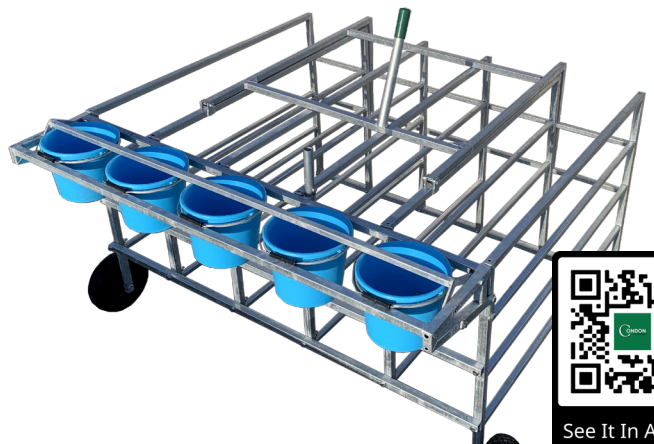
Internal Dimensions	
<b>Length:</b>	1070mm
<b>Width:</b>	345mm
<b>Height:</b>	860mm

## DELUXE DEHORNING BOX



- ✓ Can hold up to five calves at a time, five sucking buckets also included.
- ✓ Fitted with wheels to allow the box to be moved easily.
- ✓ Prevents bullying at feeding time.

Dimensions	
<b>Height:</b>	900mm
<b>Width:</b>	1600mm
<b>Depth:</b>	1500mm



## CALF STARTER BOX





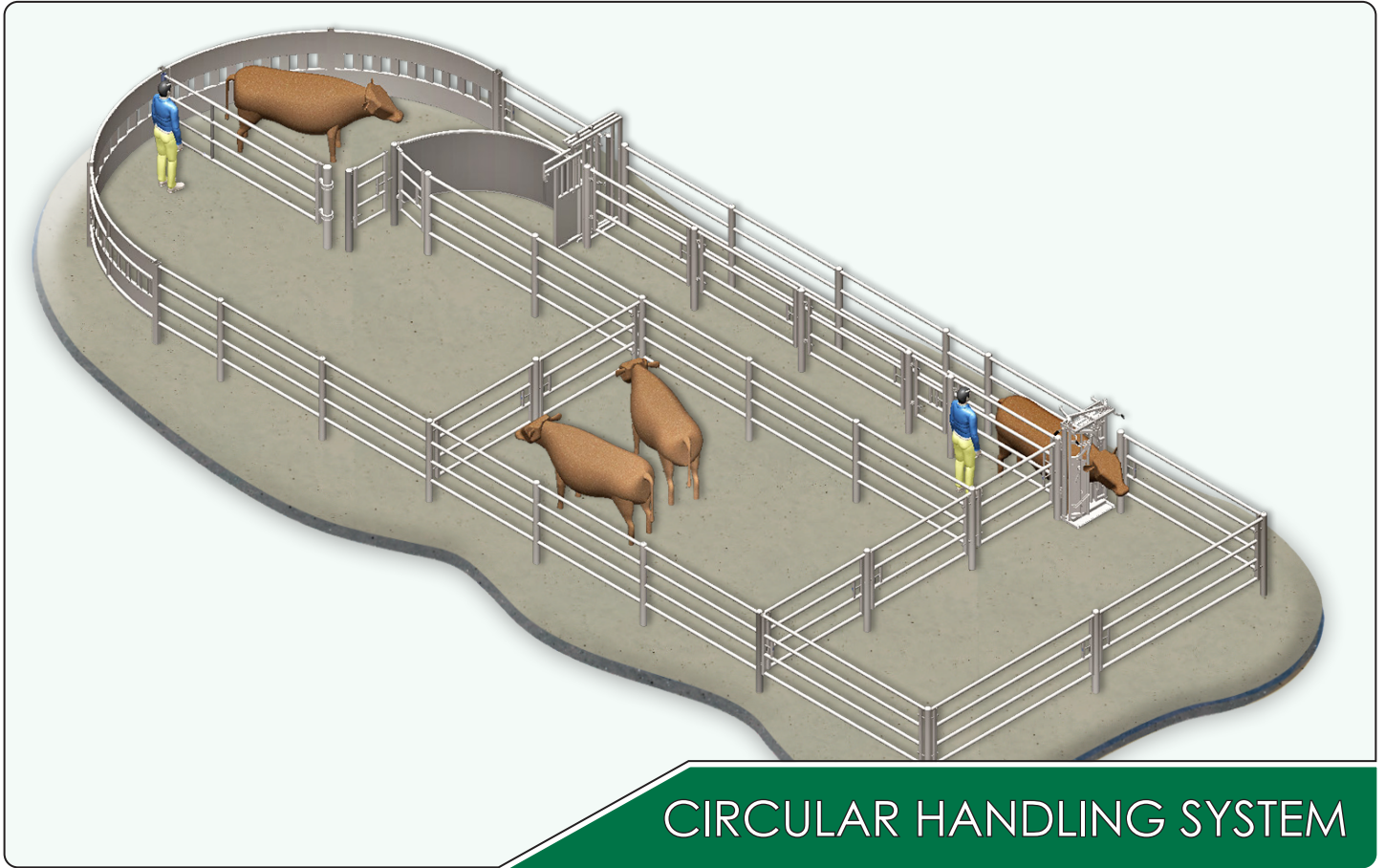






# HANDLING EQUIPMENT



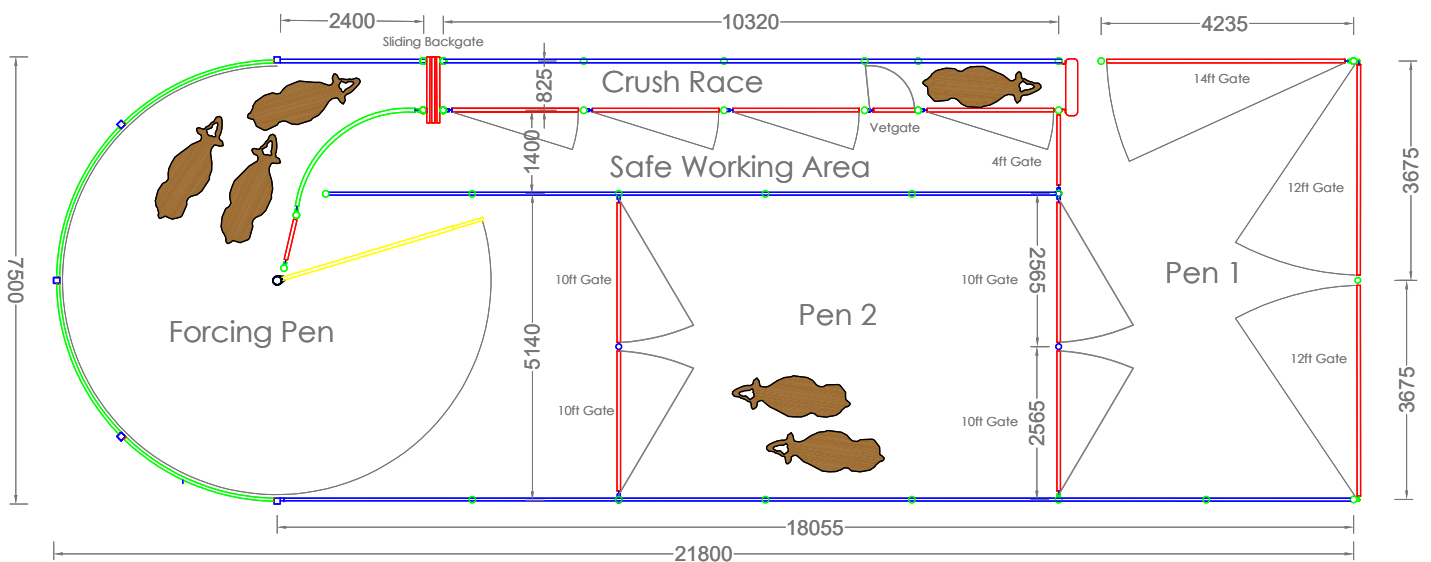


At Condon Engineering, we have developed a flair for designing Handling Systems that reduce stress and improve safety for both the operator and the animals.

We understand that one farmer's requirements may differ from the next. As such, our handling systems do not have to be a 'one size fits all' set-up.

Our Design Team create bespoke solutions with a focus on some key principles – Safety, Ease of Use & Practical Animal Flow.

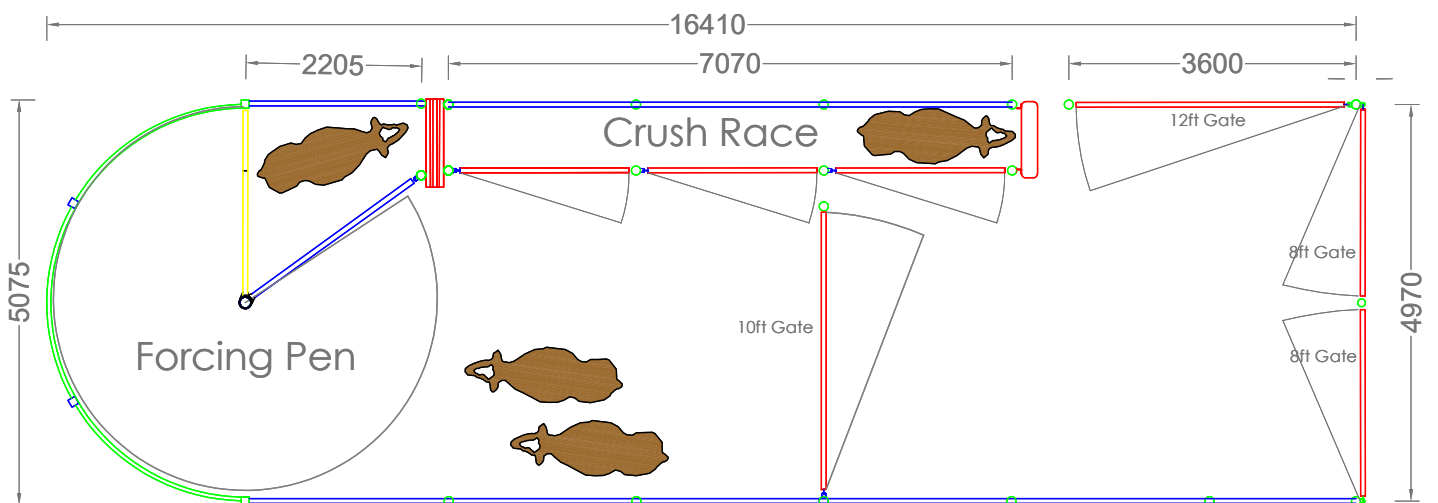
### 7.5m Sample Layout (4 Curved Panels)







### 5m Sample Layout (3 Curved Panels)





- ✓ 60x60 box section at both ends with 60mm horizontal rails.
- ✓ Hangs on 2 eyebolts and opens with single latch.
- ✓ Top bar longer to protect rising cattle.

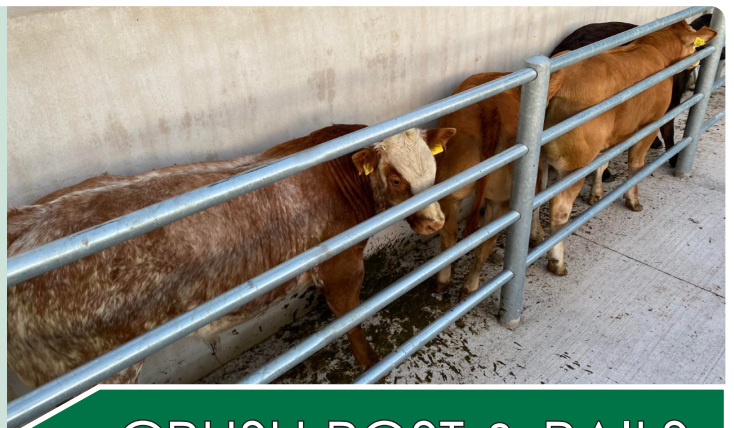


Dimensions	
<b>Length:</b>	2120mm
<b>Height:</b>	1140mm
<b>Post Centres:</b>	2355mm

## CRUSH POST & GATE PANELS

We stock a wide range of posts available to suit any crush layout. Hangers and receivers are positioned on the posts to suit our crush gate panels and back gates.

- ✓ We stock a range of posts to suit 48mm rails or 60mm rails.
- ✓ Posts should be set in concrete 450mm deep.
- ✓ Posts available with or without hangers.



Dimensions	
<b>Rail Lengths:</b>	5m/6m
<b>Post Centres:</b>	2500mm
<b>Post Height:</b>	2000mm

## CRUSH POST & RAILS

A Post & Rail crush run is ideal where gates aren't necessary. It is worth noting that we would always recommend that a crush has gate panels on one side in case of emergency.

- ✓ 2 set-ups available; 3 curved panels (to suit 5075mm diameter) or 4 curved panels (to suit 7500mm diameter) (pictured right)
- ✓ Spring loaded gate latch and angled notches provide non-return feature.
- ✓ Animals can't turn and must enter crush.



Specifications	
<b>Curved Panel Frame:</b>	50x50x3mm Box
<b>Hanging Posts:</b>	100x100x4mm Box

## CIRCULAR FORCING AREA

A circular forcing area at the back of a crush provides the farmer with the highest levels of safety and practicality. It takes the pain out of using the crush and helps save time.



- ✓ 4no. 60mm Horizontal Bars with 60x60 box uprights at both ends.
- ✓ Single standard latch w/ latch cover.
- ✓ Perfect for use as a Vet Gate also.
- ✓ **SPRING LOADED LATCH OPTION ALSO AVAILABLE.**



#### Dimensions

<b>Height:</b>	1140mm
<b>Width:</b>	750mm
<b>Post Centres (Vet Gate):</b>	920mm

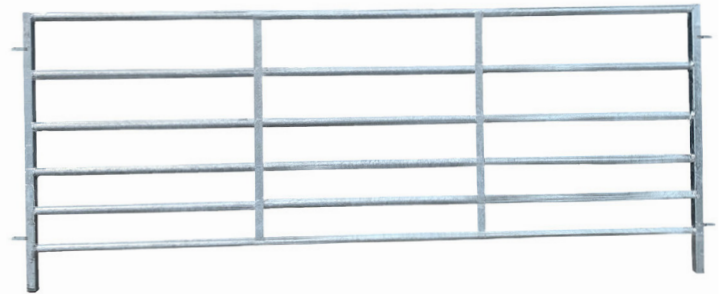
## CRUSH BACK GATE

Our Standard Crush Back Gate is may be used at the back of a race or on the side as a vet gate. It is a key part of most crush layouts. Spring loaded latch also available.

- ✓ Manufactured with strong and robust joining loops.
- ✓ Perfect solution for cattle races and cattle penning.
- ✓ Fully hot dipped galvanised.

#### Dimensions

<b>Height:</b>	1500mm
<b>Width:</b>	2400mm
<b>Spacing:</b>	290mm



## 8FT CATTLE HURDLE

The 8ft Cattle Hurdle is a perfect solution for cattle races and cattle penning. Made to a high standard with structural integrity and easy portability in mind.

- ✓ Can be fitted to open to the left or right depending on the layout of your crush.
- ✓ Simple locking system ensures gate stays closed.
- ✓ Hot dipped galvanised.

#### Dimensions

<b>Height:</b>	2000mm
<b>Opening Width:</b>	740mm
<b>Total Width:</b>	1868mm (open)



## SLIDING BACK GATE

The Sliding Back Gate is a great option, especially for farmers who are handling large herds at a time. As this gate doesn't turn, you don't need to move the next cow back out of the way.



- ✓ Neck width can be easily adjusted on either side.
- ✓ Simple 1-lever operation. Stays open when releasing animals.
- ✓ Head scoop can be easily mounted on either side.
- ✓ Available with handle on right or left hand side.
- ✓ Simple mounting system ensures compatibility with all of our crush set ups.

### Dimensions

<b>Opening Height:</b>	1800mm
<b>Closed Width:</b>	150mm
<b>Internal Width:</b>	715mm



## SEMI AUTO HEAD GATE

The Semi Auto Head Gate is our most popular head gate option. It is a very cost effective solution for the front of the crush race.

- ✓ Compatible with all crush and head gate set ups. Wide range of mounting brackets.
- ✓ Moulded plastic head piece ensures comfort for the animal.
- ✓ Restricts side to side thrashing of the animal's head.
- ✓ Ratchet system allows simple operation and quick release.
- ✓ Available in Right or Left hand mounting.
- ✓ Enables the animals head to be lifted safely, helping farmers to complete dosing and bolusing easily.

### Dimensions

<b>Height:</b>	380mm
<b>Length:</b>	1540mm
<b>Mounting Height:</b>	Approx. 900mm



## CONDON HEAD SCOOP

Our Head Scoop enables the animal's head to be lifted safely, helping farmers to complete dosing and bolusing with ease. It can be fitted to all types of crushes and is suitable for handling both dairy and beef animals.



- ✓ Opening width is easily adjusted with spring loaded handles on front.
- ✓ Should an animal manage to close the gate without putting its head through, reset handles allow the head gate to be reset without the animal exiting the crush.
- ✓ Head scoop can be easily mounted on either side.
- ✓ Multiple mounting options, making it compatible with all crush set ups.

### Dimensions

<b>Opening Height:</b>	1600mm
<b>Internal Width:</b>	735mm
<b>Head Width:</b>	100 - 250mm



## BEEF HEAD GATE

The Beef Gate is a self-locking head gate, suitable for dairy and beef animals. It is activated by the forward movement of the animal, essentially pushing their way into the correct position.

- ✓ Locks at any point, meaning door cannot be forced open from the inside.
- ✓ Handle is sleeved on a bar running the length of the crush, meaning it can be operated from the rear of the animal.
- ✓ Rubber pads on either side ensure the gate is kind to the animal.
- ✓ Available with handle on right or left hand side.
- ✓ Fully sheeted sides prevent the animal getting legs caught between bars.
- ✓ It is compatible with all of our crush set ups.

### Dimensions

<b>Opening Height:</b>	1730mm
<b>Closed Width:</b>	150mm
<b>Max Opening:</b>	730mm



## WARRIOR HEAD GATE

The Warrior head gate is a manual operation scissor type gate which locks at any point, meaning you'll never need to adjust it for the size of your animals.



- ✓ Provides full unrestricted access to the sides and neck of the animal.
- ✓ Warrior Head Gate integrated into the design.
- ✓ Sliding Back Gate also included as standard and can be fitted on left or right.
- ✓ Quick squeeze release handle allows any-hand operation.
- ✓ Weighing Scales and Head Scoop are optional extras.
- ✓ Spring loaded self closing latches on all doors.
- ✓ Middle gate features fingers to allow an anti backing bar to be pushed through.



## SQUEEZE CRUSH BOX

### Dimensions

<b>Internal Height:</b>	1750mm	<b>External Height:</b>	2300mm
<b>Internal Width:</b>	730mm	<b>External Width:</b>	1200mm
<b>Internal Length:</b>	2880mm	<b>External Length:</b>	3000mm

The Squeeze Crush Box is designed to suit herds with a variety of cattle sizes. With the squeeze controls on the side of the crush box allows any hand operation and increases efficiency.





- ✓ Provides full unrestricted access to either side of the animal.
- ✓ Comes with Beef Head Gate that is integrated into the design.
- ✓ Sliding Back Gate also included as standard and can be fitted on left or right.
- ✓ Kraiburg Monta Mat is fitted to the floor to provide superior grip.
- ✓ Weighing Scales and Head Scoop are optional extras.
- ✓ Spring loaded self closing latches on all doors.
- ✓ Middle gate features fingers to allow an anti backing bar to be pushed through.



## SUPREME CRUSH BOX

### Dimensions

<b>Internal Height:</b>	1750mm	<b>External Height:</b>	2080mm
<b>Internal Width:</b>	735mm	<b>External Width:</b>	1100mm
<b>Internal Length:</b>	2500mm	<b>External Length:</b>	2620mm

The Supreme Box is the Gold Standard in cattle handling units. It ensures maximum safety for both the operator and the animal without compromising on function or practicality.





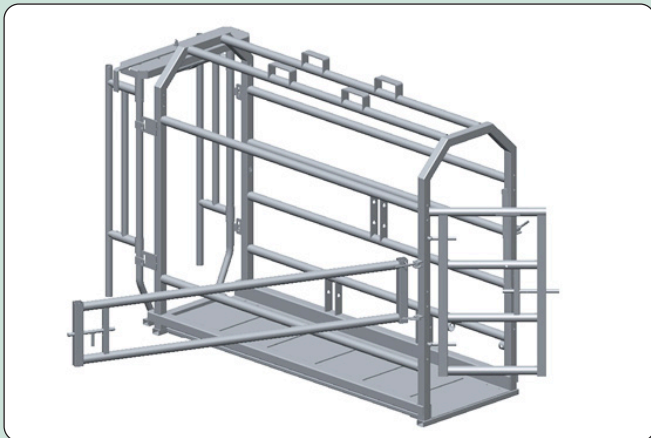


## 8FT MOBILE CRUSH

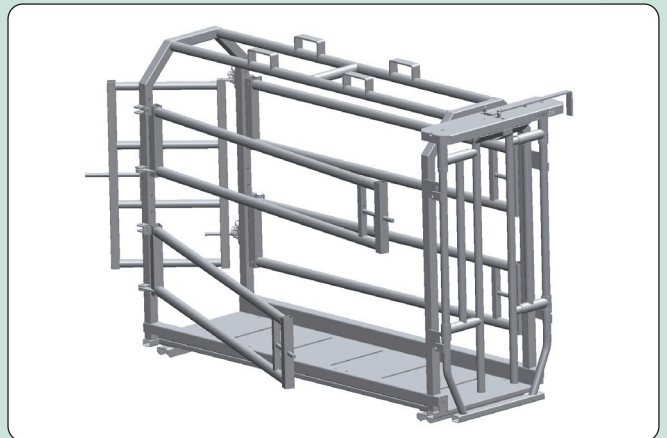
The 8 foot Mobile Crush is ideal for use on outside farms or extending existing crush races. We offer 2 options as standard, details of which can be found below.

### 3-Point Linkage

### Gates Both Sides



3-Point Linkage on one side.  
2-bar gate on the other side.



2no. 2-bar gates on each side.

### Standard Features

### Optional Extras

- ✓ 8 foot cage c/w chequer plate floor.
- ✓ Semi-auto gate & slam back gate included as standard.
- ✓ Pallet fork attachments.
- ✓ Hot Dipped Galvanised.

- ✓ Weighing System fitted below the floor.
- ✓ Head Scoop can be easily mounted.
- ✓ Crush Fingers Set.





## 16FT MOBILE CRUSH



- ✓ Chequer plate floor for front 8 foot.
- ✓ Second section rotates into a pair of 8 foot sections for transport.
- ✓ 3 point linkage and pallet fork attachments.
- ✓ Semi-auto gate and slam back gate as standard.
- ✓ 2 bar c-section gate.

### Standard Cattle Weighing Scales

TruTest MP600 Load Bars

TruTest S3 Indicator

Aluminium Chequer Plate Platform

### Other Items

MP800 Load Bars

EziWeigh7i Indicator

HD5T Load Bars

ID5000 Indicator

SRS2 Stick Reader

XRS2 Stick Reader

Visit [livestock.tru-test.com](http://livestock.tru-test.com) for more information.



## TRUTEST WEIGHING EQUIPMENT



- ✓ Fitted with semi-auto gate and extension handle to close gate from rear of animal.
- ✓ Belly band keeps the cow in position.
- ✓ Ratchet rump bar helps push the animal forward as it enters and prevents backing.
- ✓ Hand operated winch allows the operator to lift each leg easily.
- ✓ Height-adjustable W shaped bar at rear helps to secure the hind legs and ensures maximum safety for the operator.
- ✓ Wooden blocks help to position the front legs and keep them secure.
- ✓ Side gates provide greater access when necessary.



## HOOF PARING CRATE

Our Hoof Paring Crate is designed to make hoof maintenance easier and safer for both the animal and the farmer. The portable crate is typically positioned in front of a crush race when it is in use.

### Dimensions

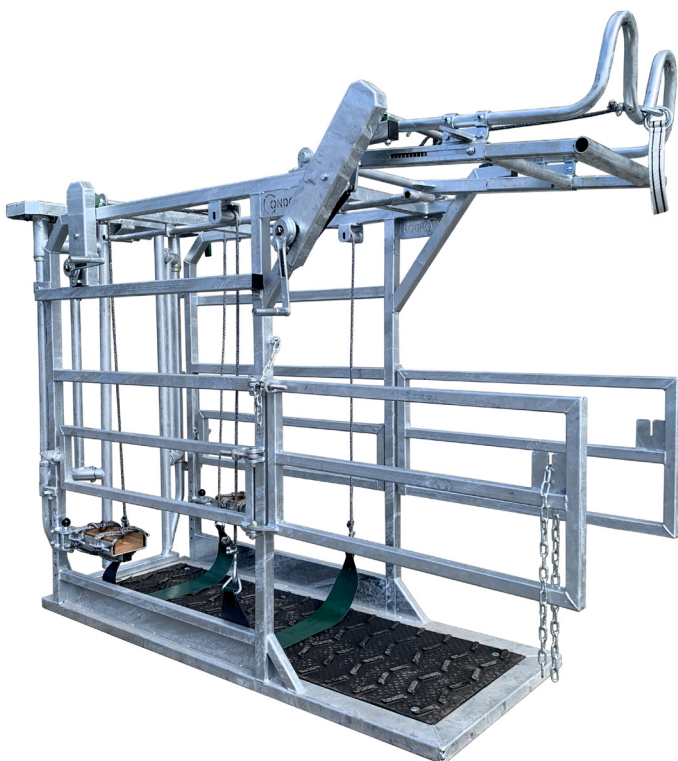
<b>Height:</b>	1865mm
<b>Width:</b>	850mm
<b>Length:</b>	2200mm



Anti-kick W shaped Bar



See It In Action



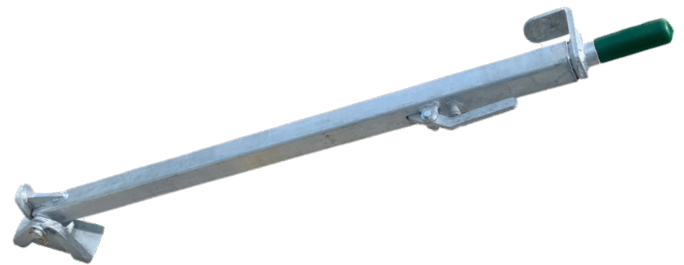


- ✓ Allows backing bar to be pushed in behind animal and slid forward.
- ✓ Angled Fingers hinge forward so bar doesn't need to be taken out to push animal forward.
- ✓ Suitable for Mobile Crush, Crush Panels & Post & Rail Crush.



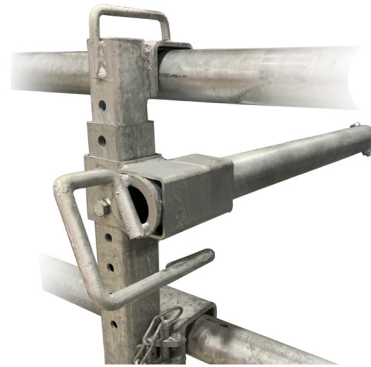
## CRUSH FINGERS SET

- ✓ Suitable for use with a Batch AI Crush.
- ✓ Position of bar is easily adjustable (forward, back, up & down) to suit the size of your animals.
- ✓ Allows for simple one-man operation, can be used to follow the animal up the Ai Crush



## AI BACKING BAR

- ✓ Suitable for use with a Mobile Crush, Crush Panels or Post & Rail Crush.
- ✓ Position of bar is easily adjustable (forward, back, up & down) to suit the size of your animals.
- ✓ Handle twists to lock bar in place from outside the crush race.



## ANTI BACKING BAR

- ✓ Suitable for use with a Mobile Crush, Crush Panels or Post & Rail Crush.
- ✓ Position of bar is easily adjustable (forward, back, up & down) to suit the size of your animals.
- ✓ Handle twists to lock bar in place from outside the crush race.



## LEG HOIST









# SHEEP EQUIPMENT





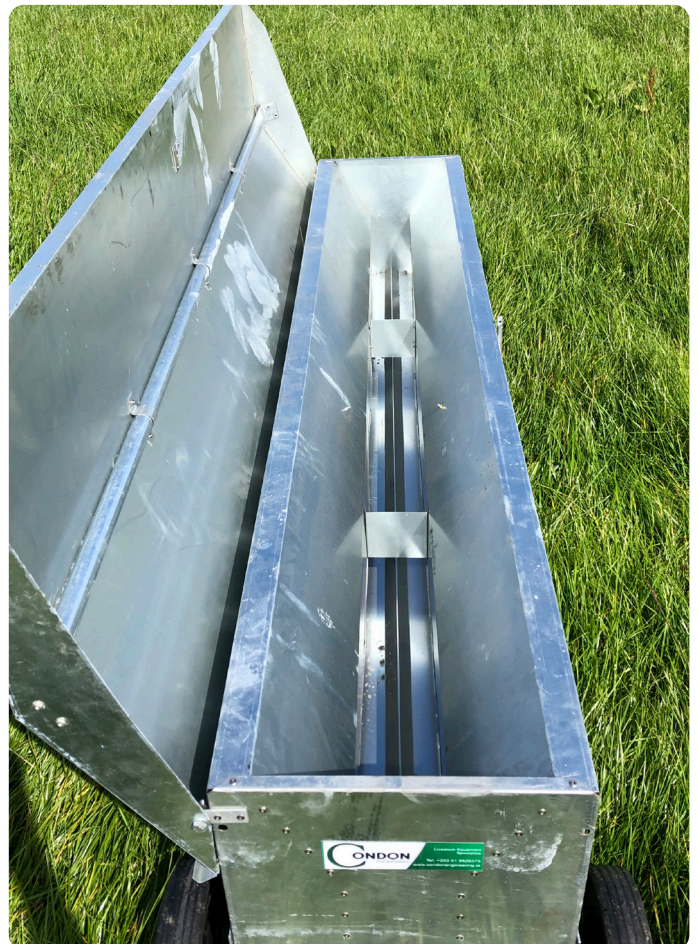
## LAMB CREEP FEEDER

The Lamb Creep Feeder is perfect for outdoor feeding for young lambs. It is very lightweight and portable and can be easily filled.

- ✓ Capacity: 198L
- ✓ Double sided feeding (24 feed spaces in total).
- ✓ Supplied with solid rubber wheels: 280mm x 60mm.
- ✓ Feed spacing is easily adjustable.
- ✓ Spring Loaded Easy Exit Feature reduces instances of head trapping.
- ✓ Very light weight and portable.

### Dimensions

<b>Height:</b>	1865mm
<b>Width:</b>	850mm
<b>Length:</b>	2400mm







## LARGE LAMB CREEP FEEDER

The Large Lamb Creep Feeder offers a lot to the farmer. It is large but portable and can be filled easily with a loader. The creep gates are held up for transport using spring loaded latches.

- ✓ Capacity: 470L
- ✓ Width between bars: 210mm
- ✓ Feeding Height: 325mm
- ✓ Wheels: 480mm diameter
- ✓ Feed rate is adjustable.
- ✓ Creep gates are hinged for transport.
- ✓ Fully Hot Dipped Galvanised.
- ✓ Detachable hitch.
- ✓ Available with / without Wheels & Hitch.





- ✓ Made from 40×40 box & 42mm Tubular Steel.
- ✓ 1 no. Adjustable Feed Rail supplied as standard.
- ✓ Eyebolts allow slope and distance to be adjusted.
- ✓ Sheep Feed Barrier is 1000mm high in total.



## SHEEP FEED BARRIER

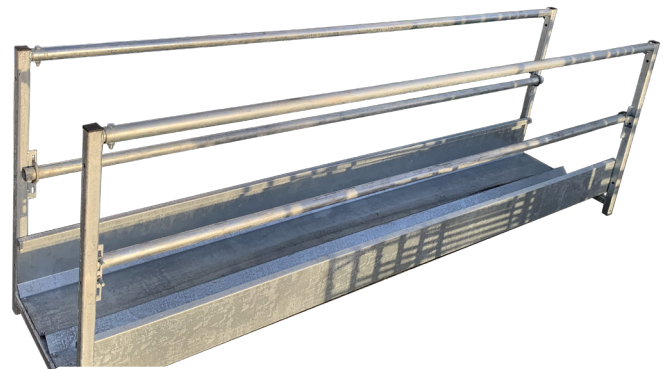
Sheep feeding barriers with adjustable feed rail are the ideal solution (along with our walk through troughs) for sheep penning.



- ✓ Available in 2.4m (8ft) or 3m (10ft) in length.
- ✓ Ideal for dividing sheep pens. Adjustable feed rail height.
- ✓ Hot dipped galvanised.

### Internal Dimensions

<b>Length:</b>	2400mm/3000mm
<b>Width:</b>	650mm
<b>Height:</b>	1000mm



## WALK THROUGH TROUGH





- ✓ Analog Clock (200kg) supplied as standard. Digital clock also available.
- ✓ 3 way Drafting gates. Equal weighing across whole length of the platform.
- ✓ Easy open front & back gates from rear.



Internal Dimensions	
<b>Length:</b>	950mm
<b>Width:</b>	365mm
<b>Height:</b>	720mm

## LAMB WEIGHING CRATE

This crate makes it easy to weigh and draft lambs so the farmer can quickly track performance, over time, ensuring lambs reach their target weight.



Lamb Weighing Crate in use



Turnover Crate in use

- ✓ Effortlessly allows full access to all parts of the animal.
- ✓ Turnover is operated by releasing the foot pedal, allowing gravity to do the work.
- ✓ Wheels for added portability.



Dimensions	
<b>Length:</b>	1600mm
<b>Width:</b>	820mm
<b>Height:</b>	1100mm

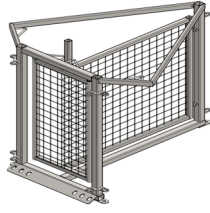
## SHEEP TURNOVER CRATE

Our New Sheep Turnover Crate offers a safe and simple means of handling your sheep. The locking system can be quickly adjusted for the size of each animal.

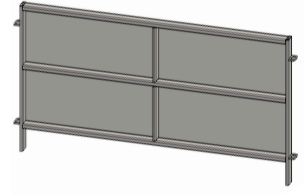


## SHEEP CRUSH ITEMS

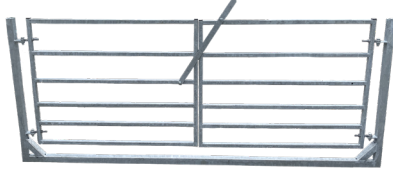
2 Way Drafting Gate



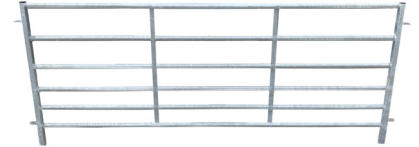
8ft. Sheeted Sheep Hurdle



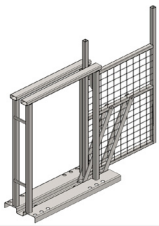
2 Gates In Frame



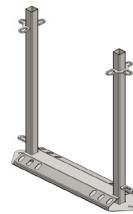
6 Bar Railed Hurdle  
(4ft/8ft)



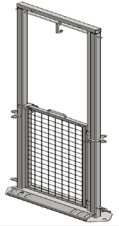
Tilt & Slide Sliding Gate



Race Joining Frame



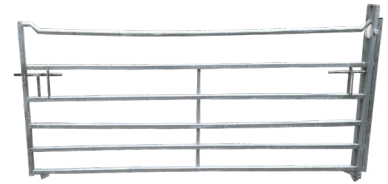
Lift & Swing Guillotine Gate



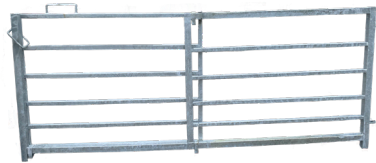
Curved Sheeted Hurdle



6 Bar Forcing Gate



6 Bar Sliding Hurdle

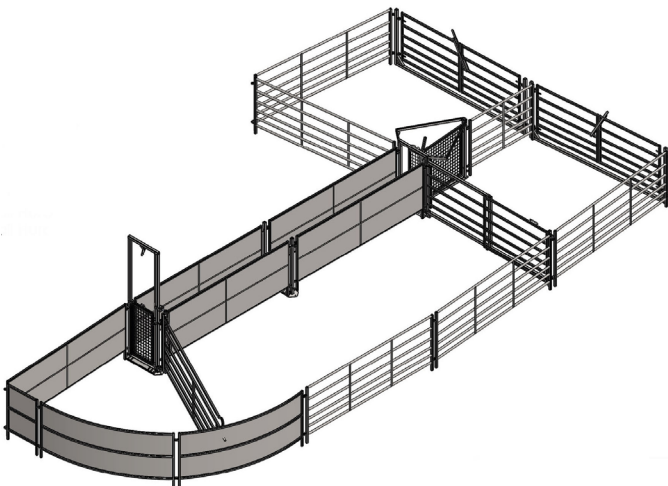


2ft Sheeted Hurdle

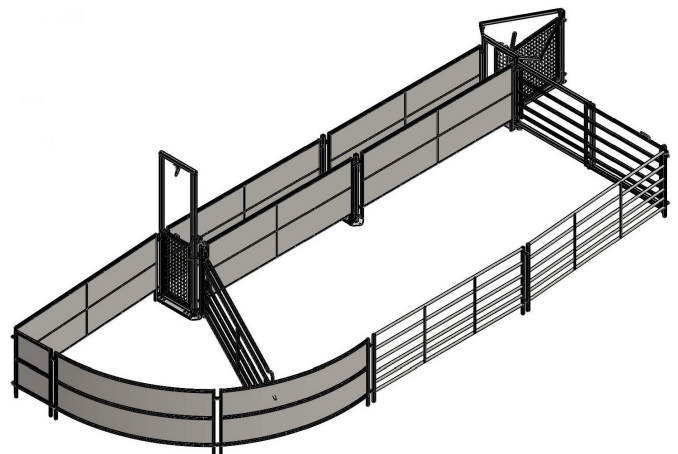


## SHEEP LAYOUTS

Layout A



Layout B







**CONDON ENGINEERING**





## Condon Engineering

Kells Road, Collon,  
Co. Louth, A92 FC91,  
Ireland

T: +353 41 9826379 

E: [info@condonengineering.ie](mailto:info@condonengineering.ie)

[www.condonengineering.ie](http://www.condonengineering.ie)

Your Agent:

### Mayo Farm Systems

Isle of Man Farm, Meadow Lane  
PR26 9JP, Leyland

T: +44 1704 821717

E: [sales@mayocowcomfort.co.uk](mailto:sales@mayocowcomfort.co.uk)

[www.mayofarmsystems.co.uk](http://www.mayofarmsystems.co.uk)



[www.condonengineering.ie](http://www.condonengineering.ie)

